

Welcome to



**NORTH
LEBANON**
Township

725 Kimmerlings Rd

Lebanon, PA 17046

717-273-7132

Mon-Fri 7:30~4:00



New Resident Packet

North Lebanon Township

History & General Informtion

North Lebanon Township was established on March 18, 1840, by the action of the Pennsylvania General Assembly. The Township contains approximately 10,735 acres or 16.8 square miles and varies on elevation from 450' to 660' above sea level. As of 2024, the Township contains approximately 65.03 miles of Township highway and 20.21 miles of State Highway for a total of 85.24 miles of Highway in the Township. Per the census, the population of the Township for 2020 is approximately 12,041.

The Township of North Lebanon is located in the center of the county of Lebanon, within the close proximity to the City of Lebanon, the county seat. The Township is located twenty-eight (28) miles northwest of the City of Lancaster, twenty-five (25) miles of the City of Reading, twenty-five (25) miles east of the City of Harrisburg, and ninety miles (90) northwest of the City of Philadelphia.

The character of the township is that of a suburban residential community, with commercial and industrial development taking place in and around the Township. There is a total of 10,735 acres of land in the Twp. Of that, approximately 5,003 acres is designated Agricultural, which also includes Intensive Ag purposes. Approximately 46% of the Township is still open space used for agricultural purposes.

The **Governing Body** of the Township consists of three elected Supervisors. The Board of Supervisors meet once a month on the third Monday at 7pm. The Board of Supervisor members are: **Edward A Brensinger, Gary R Heisey & Arden A Snook**

North Lebanon Township staff

Township Manager
Administrative Assistant
Accounting Clerk
Recycling Coordinator
Sewer Billing Clerk
Stormwater Billing Clerk
Office Clerk
Part-time & Seasonal Employees
Public Works Director
Highway Department
Wastewater Department
Building & Park Maintenance Department
Mechanic
Custodian
Code Enforcement Officer

Law Enforcement

Board of Commissioners
Chief of Police
Police Administrator
Police Secretaries
Lieutenant Administration
Lieutenant Criminal Investigations
Detective
Sergeants (2)
Corporal (4)
Patrolmen (14)
LCRPD.org
Police Department
(717) 273-8141
After Hours Dispatch
(717) 272-7621

Revised June 2025

Zoning & Voting

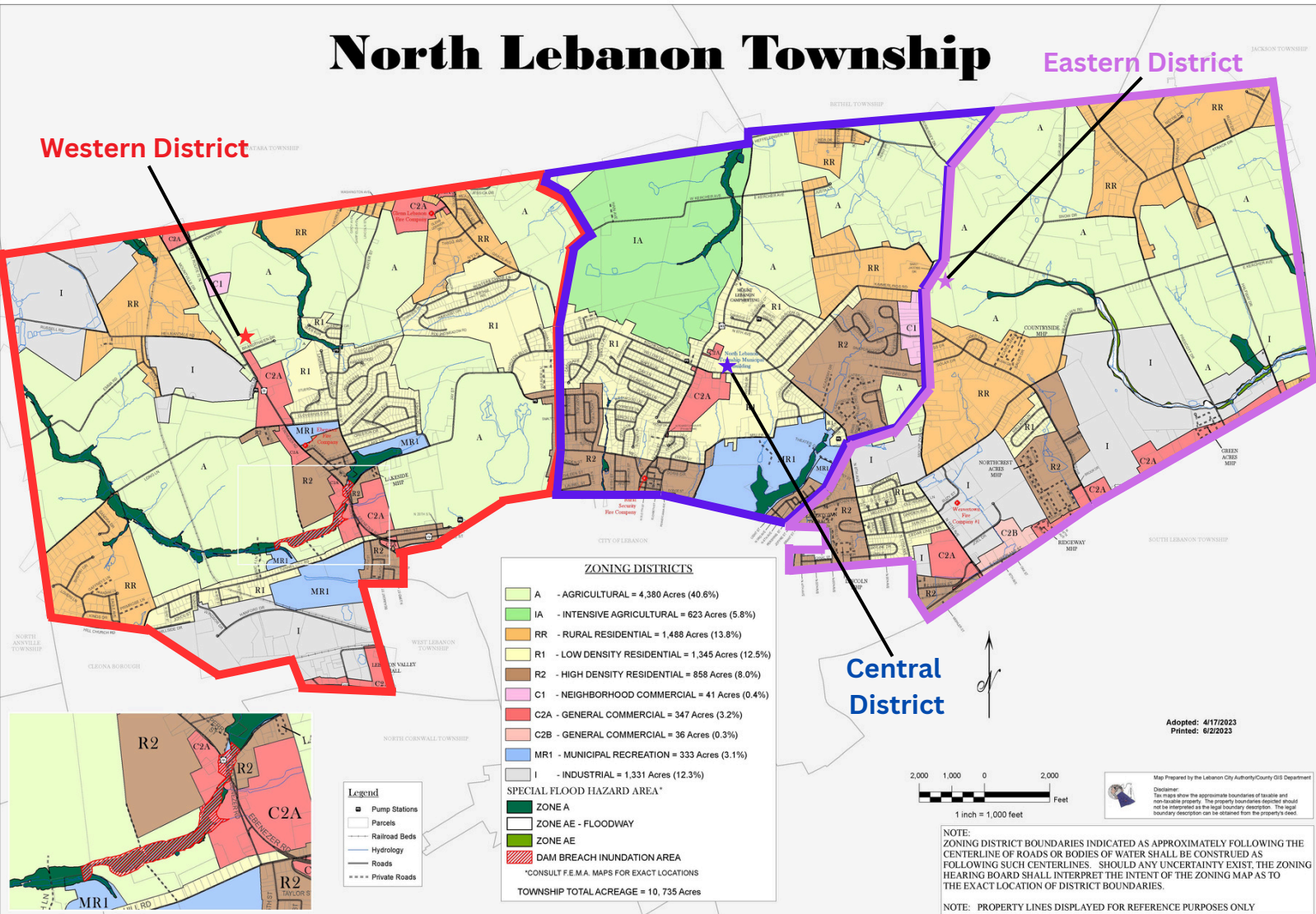
This Zoning Map can be found on our Township's website

North Lebanon Township

Western District

Eastern District

Central District



Western District - 27W (N. Annville Twp Line east to Sandhill Rd./Grace Ave.)
- Ebenezer UMC 1776 Ebenezer Rd

Central District - 27M (Sandhill Rd./Grace Ave. east to E. Maple St./Mt. Zion Rd.)
- NLT Municipal Bldg., 725 Kimmerlings Road

Eastern District - 27E (E. Maple St./Mt. Zion Rd. east to Jackson Twp. line)
- Kimmerlings Grange, 990 Mt Zion Rd.

Registration and mail-in/absentee ballot information can be obtained at:

Lebanon County Voter's Registration Office

Room 209, Municipal Building

400 S. Eighth Street

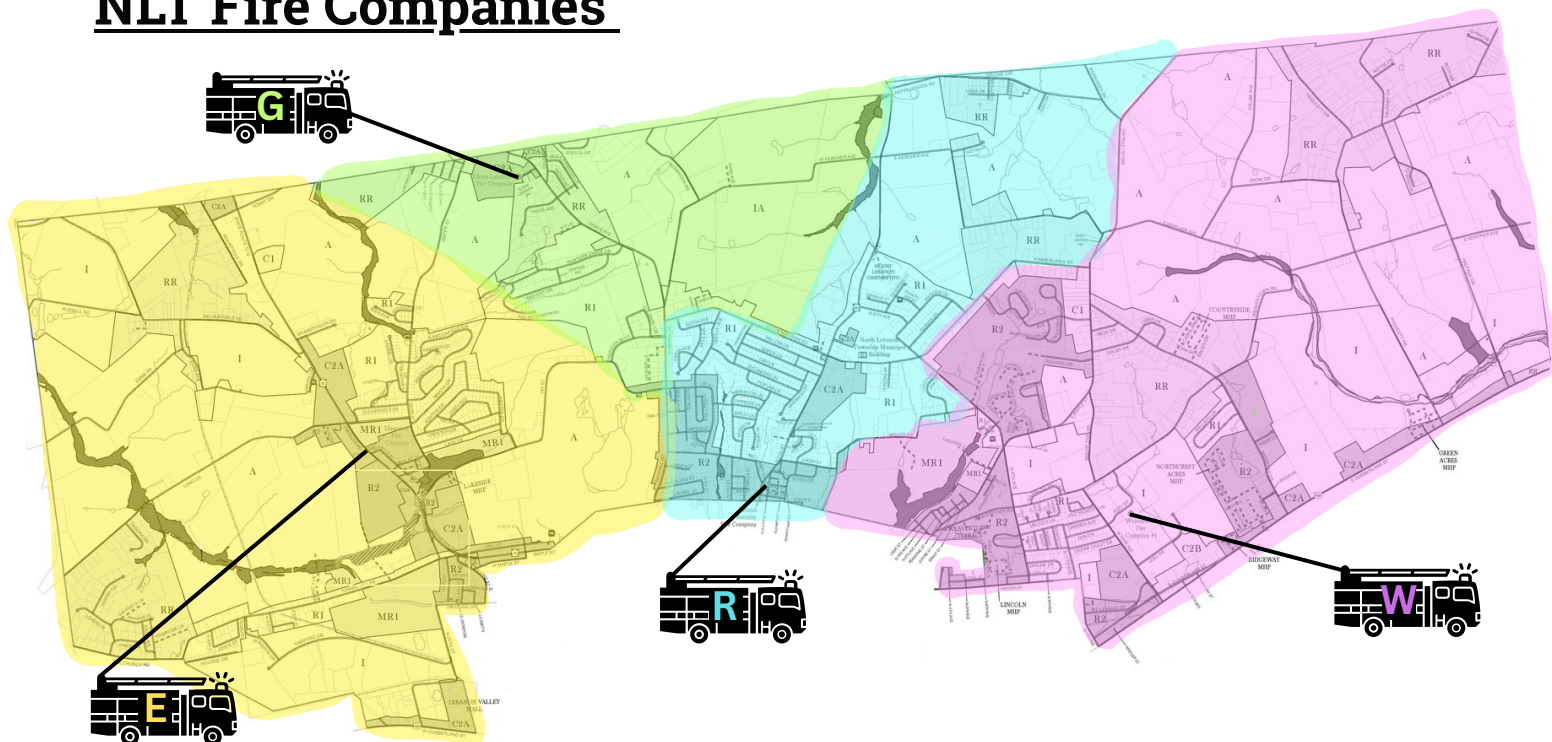
Lebanon, PA 17042

(717)228-4428

This information & all important election dates can be found on the Townships website at

<https://northlebanontwppa.gov/voting-information>

NLT Fire Companies



There are four active **volunteer** Fire Companies in North Lebanon Township. For any questions related to volunteering, Knox Boxes or the fire companies in general, please reach out using the contact information below:



Ebenezer Fire Co. (9) located on North Route 72 in the Western District
(717) 273-2361 - <https://www.ebenezerfire9.com>

Glenn Lebanon Fire Co. (42) located off Grace Avenue in the Western District
(717) 865-3948 - <https://www.glennlebanonfireco.com>

Rural Security Fire Co. (43) located at 7th & Pine Streets in the Central District
(717) 273-4472 - <https://northlebanontwppa.gov/rural-security-fire-company>

Weavertown Fire Co. (28) located on Weavertown Road in the Eastern District
(717) 228-2827 - <https://northlebanontwppa.gov/weavertown-fire-company>



North Lebanon Township Boards

Boards consisting of Township residents appointed by the Township Supervisors are the Municipal Authority, the Planning Commission, Zoning Hearing Board, Parks & Recreation Board and Ag Security Committee.

Municipal Authority

The Municipal Authority was established on November 1, 1982, and is a body corporate and politic, organized under the Municipal Authority Act. Regular meetings are held the second Thursday of each month at 7:00 PM and are open to the public.

The Municipal Authority has been incorporated pursuant to appropriated action of the governing body of the Township. The Municipal Authority has the power to, among other things, acquire, hold, construct, improve, maintain, and operate sewer lines and collection systems. The Municipal Authority controls and maintains a unified wastewater system for the North Lebanon Township

The governing body of the Municipal Authority is a Board consisting of five members appointed by the Board of Supervisors for a five-year term. The terms of the members are staggered so that the term of one member expires each year and may be re-appointed for consecutive terms. The Board is comprised of the members listed below:

Gary Heisey, Dawn Hawkins, Tod Dissinger, Rodney Lilley and Gary Echard

The Municipal Authority also has the ability to serve as a conduit issuer of Municipal Revenue Bonds, for which there is no liability to the Township and allows the Municipal Authority to earn revenue for the financing of smaller sewer projects.

Authority Billing

Billing is done on a quarterly basis as follows:



<u>QUARTER</u>	<u>BILLING PERIOD</u>	<u>BILLING DATE - DUE DATE</u>
1 st Qtr	Jan - April	May 10 - <i>DUE June 10</i>
2 nd Qtr	April - July	August 10 - <i>DUE September 10</i>
3 rd Qtr	July - Oct	November 10 - <i>DUE December 10</i>
4 th Qtr	Oct - Jan	February 10 - <i>DUE March 10</i>

Planning Commission

The Planning Commission is comprised of five residents, who are appointed by the Board of Supervisors to serve a four-year term. The Planning Commission usually meets the second Monday of each month at 7:00 PM to review any proposed land development/subdivision plans within the Township. In the reviewing process they utilize the Township Zoning Ordinance to help promote orderly development. This Commission works in unison with the Township appointed Engineer to provide recommendations to the Board of Supervisors pertaining to the development issues in the Township, as well as recommendations on certain Zoning Issues.

The Planning Commission consists of the following members:

Scott Artz, David Leid, Sam Pennypacker, Darlene Martin and Kevin George

Parks & Recreation Board

The Parks & Recreation Board is appointed by the Board of Supervisors to serve a three-year term. The purpose of this Board is to regulate and maintain the various parks and recreational areas in the Township. The Board establishes, adopts, and regulates policies pertaining to group activities and/or individual uses of the Township's facilities. This Board is also charged with the task of creating a Comprehensive Plan for the Township facilities. Anyone wishing to volunteer for community services related to park maintenance is asked to contact the Township office.

The Parks & Recreation Board meets on the first Tuesday of each month at 7:00 PM and consists of the following members:

Dwayne Elder, Corey Uhrich, Ryan Schmidt, Mark Grumbine and Audrey Blauch

Volunteers

Your township has several committees, commissions, and boards which are staffed by volunteers. At various times, there is a need to find new members for these positions. In order to facilitate the finding of new members, the township maintains a human resources file of individuals that would be willing to serve the township. Volunteers are also appreciated to assist in the maintenance of our parks. We accept any community service, youth groups, or Eagle Scout project requests. If you find you have such an interest, please stop in the office to fill out the paperwork or complete the fillable form online.

Zoning Hearing Board

The Zoning Hearing Board consists of three Township residents (and two alternates) appointed by the Board of Supervisors to serve a three-year term. The Zoning Hearing Board also has its own Solicitor.

The Zoning Hearing Board usually meets on an “as needed” basis. Their purpose is to hear testimony from the parties affected by the appeal. The Zoning Hearing Board has forty-five (45) days in which to render a decision. Zoning hearing requests are initiated through the Lebanon County Planning Department.

The most common situations for petitioning the Zoning Hearing Board are as follows:

1. Zoning Administrators determination of the Township Zoning Ordinance
2. Applicants for variances to the Zoning Ordinances
3. Applicants for special exceptions to the Zoning Ordinance.

The Zoning Hearing Board consists of the following members:

Ed Swisher, Lee Spencer, Allen Heagy and Nathan Arnold (alternate)

Solicitor – Andrew Morrow

Ag Security Committee

North Lebanon Township has an established Agricultural Security Committee. The committee deals with issues pertaining to securing farmlands located within the Township. Meetings are held on an “as needed” basis. With the issue of Land Preservation becoming more important, this committee is vital to the Township’s farming community. The committee is comprised of seven residents and one Supervisor Liaison and only becomes active when an ag security request is received.



Recreation in North Lebanon Township

There are plenty of recreational spots to get out and enjoy everything that North Lebanon Township has to offer. From Fishing to Shuffleboard, Picnic venues and playgrounds, we have plenty of options in our local parks.

LIONS LAKE PARK

Lions Lake Park is located in the Western District, between Water and Jay Streets. This public park area offers many options for the residents. A recently upgraded (summer of 2025) playground area, a macadam walking trail, fishing (with limited boating), baseball field, soccer field, and a volleyball court are a few of the options available. Our 13-acre lake is stocked with trout by the PA Fish and Boat Commission. The park offers several picnic areas for family outings or special occasions. The larger pavilion area has enclosed kitchen facilities that can be reserved by contacting the Township office. There are two open air pavilion areas that also require reservations.



NORTH LEBANON COMMUNITY PARK

This park is located off Kimmerlings Road and is in the Central District of the Township. This park features many sporting options for group activities. Sporting fields such as baseball, basketball, tennis, pickleball, and soccer are an attraction. The pavilion area, which can be reserved, includes an equipped kitchen and shuffleboard playing area. An open-air pavilion is also available. Sports field areas located to the east of the pavilion area and north to N 8th Ave are included within the Community Park.



LENNI LENAPE RECREATION PARK

This park includes a beautiful walking path, playground area, and disc golf course that weaves in and out of the wooded area. There are two open-air pavilions that may be reserved, one with the option of electricity. Many shade trees have been planted over the years, and are available for memorial dedication. For more information, please reach out to the North Lebanon Township Office.



UNION CANAL DAM TUNNEL HILL PARK

This community park is located in the Western District and is a designated historic area. Some options to enjoy are the hiking trails, fishing, and picnic facilities. Many Scouting groups use this recreational area for various training and award ceremonies. The north side of the Union Canal Park, located on the north side of Tunnel Hill Road, has been opened for public use. The Lebanon County Historical Society and the Friends of Union Canal are instrumental for the park's existence and maintenance. Special community events, such as Union Canal Days and canal boat tours, are offered at this park.



STOEVERS DAM PARK

This park is located in the Central District of the Township. This stocked lake is a large attraction in this area, for it's boating and summer/winter fishing. Several nature and hiking trails, picnic areas, two illuminated ball fields and a nature barn are additional features in this park. Limited overnight camping facilities are available. This recreational area is located in North Lebanon Township however it is owned and operated by the City of Lebanon (717-639-2800).



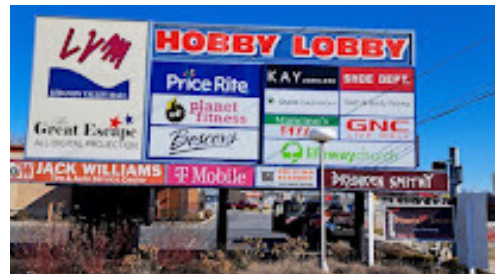
County & Township Information

ENTERTAINMENT

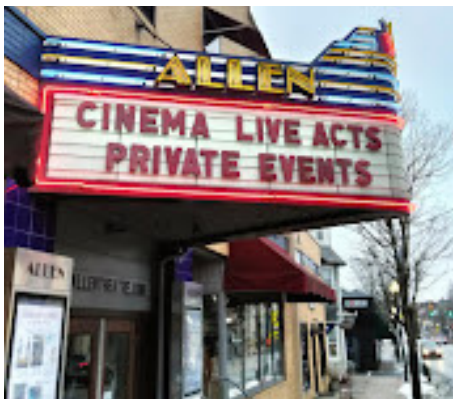
The Township has a Community Theater, located on Theater Drive (off Maple Street), which presents six (6) productions a year. The Union Canal, located off Union Canal Drive/Tunnel Hill Road, hosts scheduled tours. Tours are also offered at Godshall's Quality Meat on Weavertown Road, as long as proper notice is given, and requirements are met.



There are two (2) major shopping complexes contained in the Township. In the Eastern District the Wal-Mart Super Center is located on East Lehman Street/ N 15th Avenue. The Lebanon Valley Mall, which is in the Western District, is located on State Route 422 (West Cumberland Street).



For all of the movie buffs, there is the Allen Movie Theatre located in Annville, PA. The Allen Theatre also schedules periodic local drama presentations as well as various entertainment activities. If you don't mind going a little further up Route 422 to Palmyra, there is Flagship Cinemas Premium at 2 N. Londonderry Sq. Palmyra Pa 17078.



TRANSPORTATION

U.S. Route 422 traverses the Township connecting Hershey and Reading. State Route 72 connects you to the Pennsylvania Turnpike and the City of Lancaster and also services the Township. Other accessible attractions from the Turnpike are Philadelphia and Allentown. The Township is located an easy ten minutes from Interstate 78 and 81.

Conrail provides freight transportation to the industrial residents of the Township along with several freight lines, which operate out of the Lebanon area. Commuter and intercounty bus service is provided by Colt Mini-Bus Services.



UTILITIES

Met-Ed/First Energy provides electrical services throughout the Township. The U.G.I. Corporation supplies natural gas to most of the area. The Township's water service is furnished by the City of Lebanon Authority. Wastewater services are maintained by North Lebanon Township Municipal Authority, with treatment services being conducted by the City of Lebanon Authority Treatment Plant.



Residents have their choice of refuse collection companies who are responsible for collecting trash and certain recyclables. A list is available on our Township website with names, numbers, and the address of each company. The Greater Lebanon Refuse Authority, located in the West District on Russell Road, is an option for residents to dispose of various unwanted materials. The GLRA also offers many recycling options. North Lebanon Township is a Mandatory Recycling Municipality.



1800 Russell Road • Lebanon PA 17046
Phone: 717.867.5790 • Email: info@goglra.org



Xfinity (previously Comcast Cable) provides cable services to families located in Lebanon County. A Xfinity store can be located in North Cornwall Township at 1790 Quentin Road, Lebanon PA 17042. Satellite TV options are available by contacting their respective companies.



SCHOOLS

The Cornwall Lebanon School District <https://www.clsd.k12.pa.us> operates four elementary schools, two of which are located in North Lebanon Township. The junior/senior high schools (Cedar Crest Campus) are located on Evergreen Road, in South Lebanon Township. Public school options are as listed below:

<u>School Name</u>	<u>Grades Served</u>	<u>Township</u>
Cornwall Elementary	K-5	Cornwall Borough
Ebenezer Elementary	K-5	N. Lebanon Twp
South Lebanon Elementary	K-5	S. Lebanon Twp
Union Canal Elementary	K-5	N. Lebanon Twp
Cedar Crest Middle School	6-8	S. Lebanon Twp
Cedar Crest High School	9-12	S. Lebanon Twp



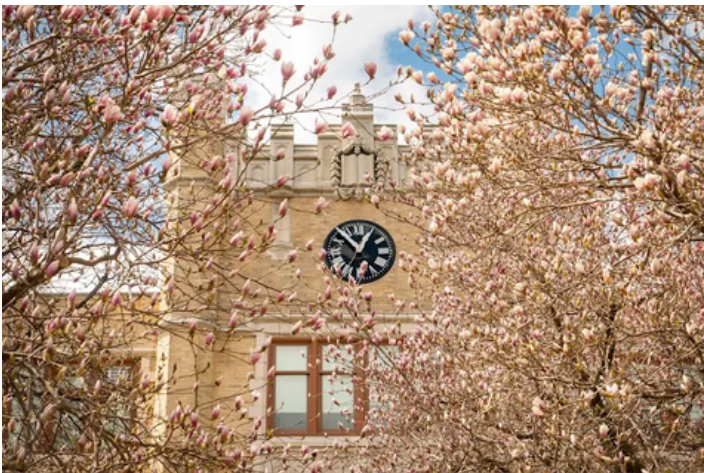
Several privately owned schools and daycare facilities operate within North Lebanon Township. Some of which are Kochenderfer Christian Daycare Center, YMCA Children's Center, New Covenant Christian School, Our Lady of the Cross & Lebanon Christian Academy.

ADULT EDUCATION

Lebanon County and surrounding areas contribute to higher education with a progressive spectrum of learning institutions. Lebanon Valley College offers Music, Sports, and Data Processing Centers, Foreign Language and Continuing Adult Education. High School training is offered at the Lebanon Career and Technology Center and the Penn State Extension Office. Adult education is available according to the LCTC schedule. HACC is also now located on LVC Campus grounds.

WEPA Empowerment Center is a non-profit organization committed to fostering leadership, cultural competency, and individual growth by developing close partnerships with like-hearted organizations providing services and program opportunities throughout South Central, Pennsylvania. They have opportunities for enrichment in medical, culinary & mechanical fields along with bilingual classes and GED diploma achievement classes.

Just outside of the immediate area, are Penn State University and the Reading Area Community College.



MEDICAL FACILITIES

There are several medical and dental laboratories in Lebanon County. Lebanon County has one large general hospital with particular emphasis on Obstetrics & Gynecology and outpatient surgery. The Well Span-Good Samaritan Health System is equipped with state-of-the-art equipment and procedures. Newly expanded services include the Cardiac Treatment and care unit. The Hyman S. Kaplan Pavilion, located at 4th and Willow Streets, is owned and operated by the Well Span-Good Samaritan Health System and is home to various medical services, such as Physical Therapy. Please visit their website for additional information.

We also offer many urgent care centers in the county. No appointments are needed at these facilities and there is care for all ages. Lancaster General Health Urgent Care can be found at 1701 Cornwall Road, Floor 1. The business week hours for Lancaster General are from 9am-9pm while Saturdays and Sundays open from 8am-8pm. Just outside of Lebanon, you can find UPMC Urgent Care located at 1251 E Main St, Annville PA 17003 and Wellspan Urgent Care located at 9 Nathan Lane, Annville PA 17003. Both facilities' hours are 8am-8pm Monday through Friday.

Also located in Lebanon County is the Veterans Administration Medical Center and Well Span Philhaven Mental Hospital. Within a short distance from Lebanon is Lancaster General Hospital and Penn State Hershey Medical Center. Ambulance services for Township residents can be received by First Aid & Safety Patrol (717- 272-1234). The choice of privately owned services offers residents other options.

The Department of Emergency Services (DES) is responsible for all of Lebanon County's disaster and emergency planning. The DES coordinates emergency procedures with the individual townships and boroughs in the county. The phone number for DES dispatch is 717-272-7621. (This phone number is also used for contacting a Police Officer when none are available by phoning the Police Department office after hours). North Lebanon Township Supervisors appointed Lebanon County as DES Coordinator for the Township.



Lebanon County Department of
Emergency Services
1805 Cornwall Rd Lebanon PA 17042
717-272-7621



The County is responsible for keeping an up-to-date Emergency Operations Manual for the Township. Also, should an emergency of some sort occur, the County would be instrumental in coordinating management activities. Lebanon County DES provides 24/7 service to emergency responders and the public. They are a great resource for Emergency Preparedness & offer a Functional Needs Registry. Visit them on the web at <https://www.lcdes.org/>.

In case of emergency, fire departments or ambulance units can be notified by dialing "911".

STORMWATER FEE

A stormwater management fee was established by North Lebanon Township to ensure Township owned stormwater management facilities are well maintained and to pay for the implementation of programs and facilities designed to reduce stormwater pollution. Stormwater pollution is a Township wide issue that must be properly managed to improve the quality of our local waterways. The operation and maintenance of a municipal separate storm sewer system (MS4) is expensive, especially when federal and state regulatory requirements concerning water quality are considered.

1 ERU (Equivalent Residential Unit) = \$40.00

For MOST residential properties, billing is done on an annual basis. The Stormwater invoice will be mailed out the first week of January and would be due the first week of February.
For any property with a tax status that is not residential, billing is done on a quarterly basis (if assigned more than 6 ERU’s) as follows:

<u>QUARTER</u>	<u>BILLING PERIOD</u>	<u>BILLING DATE - DUE DATE</u>
1 st Qtr	Jan 1 - Mar 31	January 10 - <i>DUE February 10</i>
2 nd Qtr	April 1 - June 30	April 1 - <i>DUE May 1</i>
3 rd Qtr	July 1 - Sept 30	July 1 - <i>DUE August 1</i>
4 th Qtr	Oct 1 - Dec 31	October 1 - <i>DUE November 1</i>

TAX COLLECTION

The Municipal Real Estate tax statements and Street Light, where applicable, are issued by Lebanon County Treasurers Office, acting as the township’s tax collecting agency. Municipal taxes are received on March 1. Taxes are payable at a 2% discount until April 30, at face value until June 30, and at an additional 10% penalty added on July 1. Unpaid Real Estate taxes as of the first of January of the following year are filed at the County Tax Claim Bureau for collection with any additional penalties and costs.

Earned Income Tax (EIT) and Local Services Taxes (LST) are collected by Keystone Collection Agency. Any delinquent Street Light taxes, where applicable, are collected by Lebanon County Treasurer’s Office and delinquent Local Services Tax are collected by Keystone Collection Agency.

NOTE: Anyone who deals with a mortgage company that pays real estate taxes directly, please be aware that your company does not pay Local Services Tax or Street Light Taxes. You are personally responsible for payment of these taxes.

TAX RATES

Real Estate (Mills)

School District 2025-2026 (subject to change)	19.2114
Township (1.59 General & .42 Fire Protection)	2.01
County (2025)	4.3925
Earned Income ... (Shared .5% -Twp. & .5% School)	1 %
Local Services Tax	\$52.00

Telephone & Office Information



TOWNSHIP OFFICE: 717-273-7132

725 Kimmerlings Rd Lebanon PA 17046

Township Manager & Supervisors

Sewer & Stormwater Billing Department

Driveway / Road Occupancy / Sewer Permits

Recycling Information / General Information

Hours 7:30 AM – 4:00 PM (Monday – Friday)



POLICE DEPARTMENT: 717-273-8141

725 Kimmerlings Rd Lebanon PA 17046

<https://lebanon.crimewatchpa.com/lcrpd>

AFTER HOURS County Dispatch: 717-272-7621

Office Hours 7:30 AM – 4:00 PM

OFFICERS ON DUTY 24 HOURS



AMBULANCE: 911

FIRE DEPARTMENT: 911

CITY OF LEBANON AUTHORITY: 717-272-2181

DES LEBANON COUNTY: 717-272-7621

GAME COMMISSIONER: 717-787-4250

GLRA: 717-867-5790

KEYSTONE COLLECTION AGENCY: 717-272-3770

LEBANON COUNTY PLANNING: 717-228-4444

LEBANON COUNTY TREASURER: 717-228-4420

VOTER REGISTRATION: 717-228-4428

