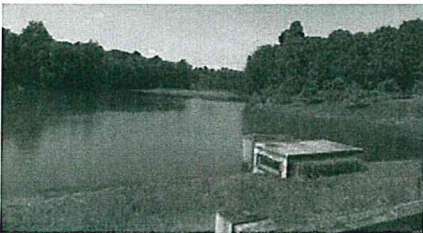
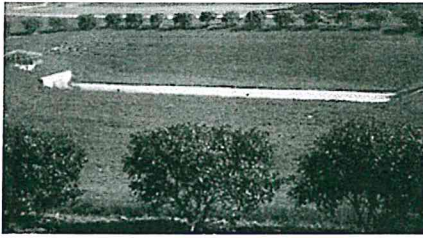


Pond Maintenance



What are stormwater ponds?

Ponds are facilities designed to collect stormwater and pollutants and prevent flooding downstream. Dry ponds only contain pools of water after a rain event, whereas wet ponds contain permanent pools of water. Dry ponds can be designed to also include concrete channels and sand filters. Wet ponds can also include areas of wetland plantings.

Ponds are designed with a dam to hold back water when storm events occur. A control structure regulates the release of water to the stream at a lower elevation. When it rains, the amount of water received by the pond increases, but the control structure slows down the release of water, allowing time for pollutants to settle at the bottom of the pond.

Maintenance you can perform:

As needed:

- ✓ Eliminate or reduce pollutant sources on your property.
- ✓ Repair erosion or bare soil with grass seed and cover.
- ✓ Ensure that pond safety signs are in place.

Monthly

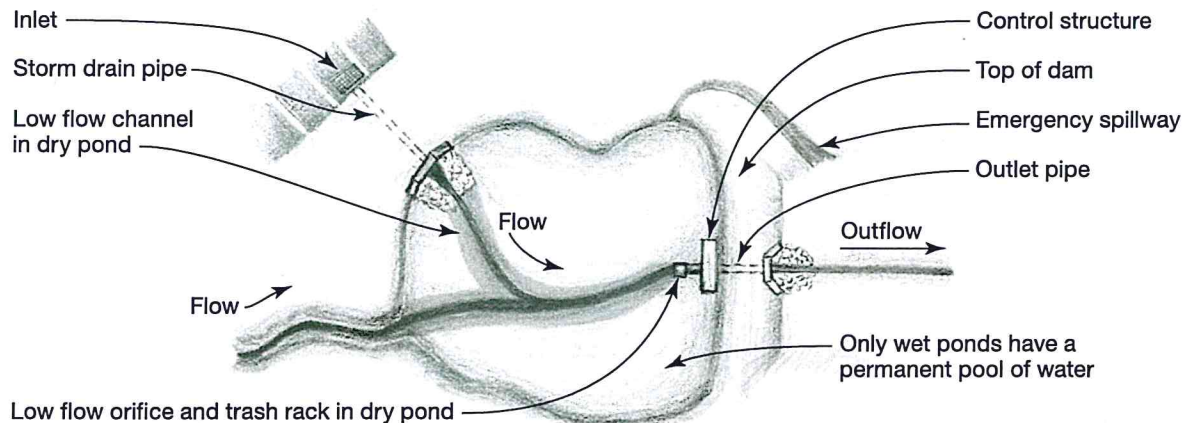
- ✓ Remove trash and debris.
- ✓ Inspect the pond to determine if there is damage or if additional maintenance is needed.

Seasonally

- ✓ Mow surrounding grass.
- ✓ Remove trees and woody vegetation from the dam, pipes, channels, and near the control structure.

Avoid

- ✗ Don't enter the water. No swimming, skating, wading, or boating in the pond.
- ✗ Don't attempt to do maintenance work in the water. This should be done by professionals.
- ✗ Don't apply herbicides, fertilizers, or pesticides in or around the pond.



CHESAPEAKE BAY FOUNDATION
Saving a National Treasure

URS

**WILLIAM PENN
FOUNDATION**

Why is it important to maintain your pond?

An unmaintained pond may:

- Not remove pollutants as intended and allow polluted water to enter streams and rivers
- Become filled with sediment and debris, which can lead to community complaints
- Cause a complete failure, which can endanger downstream areas

Recommended maintenance checklist

- Trash and Debris Removal**
April through November
- Monitoring**
April through November
- Mowing**
April through September

Observations that require professional attention

Professional Maintenance Issues

- Missing safety signs
- Erosion along pond slopes or dam
- Damage or clogging in structures or pipes
- Sediment, trash, or debris “islands” in the pond
- Standing water in a dry pond for more than 72 hours
- Damage or cracking in the control structure
- Damage or corrosion to trash rack
- Leaking pipes or control structure

Serious Failures

- Cracks or sink holes in the dam
- Damage to control structure
- Erosion or slope failure on dam
- Beaver dams in the wet pool
- Animal burrows in the dam embankment
- Missing manhole covers on the control structure

Serious failures require immediate attention! Call the pond owner or municipality immediately if a serious failure in a pond is observed.

When to call a professional

Structural maintenance and serious failure issues must be fixed by professionals. No one should remove manholes or enter the control structure without proper training, certification, and permits for confined space entry. Entering the water or control structure without these requirements is a violation of state law and could be dangerous or deadly.



If you have questions or need more information, please visit cbf.org.