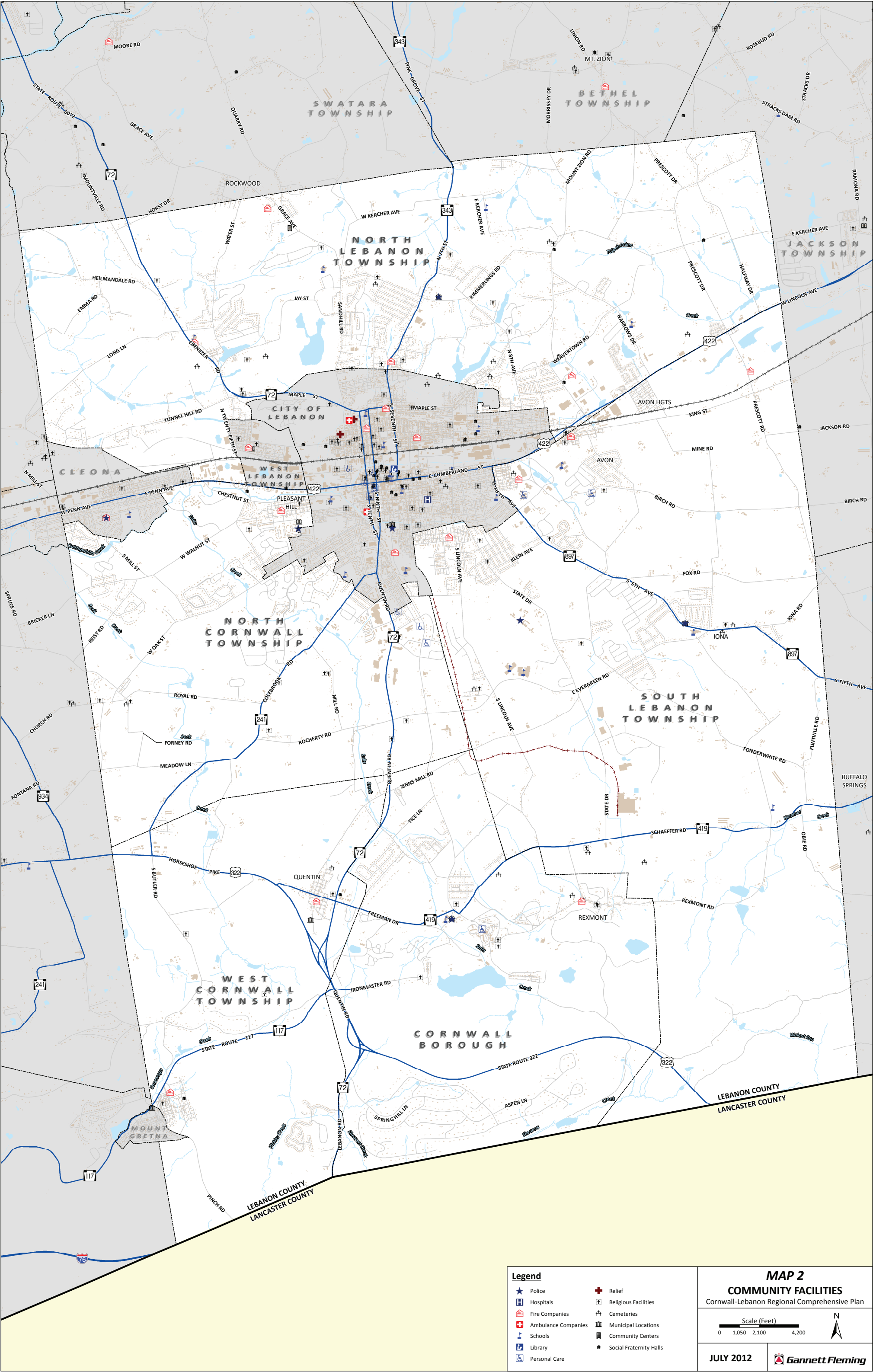




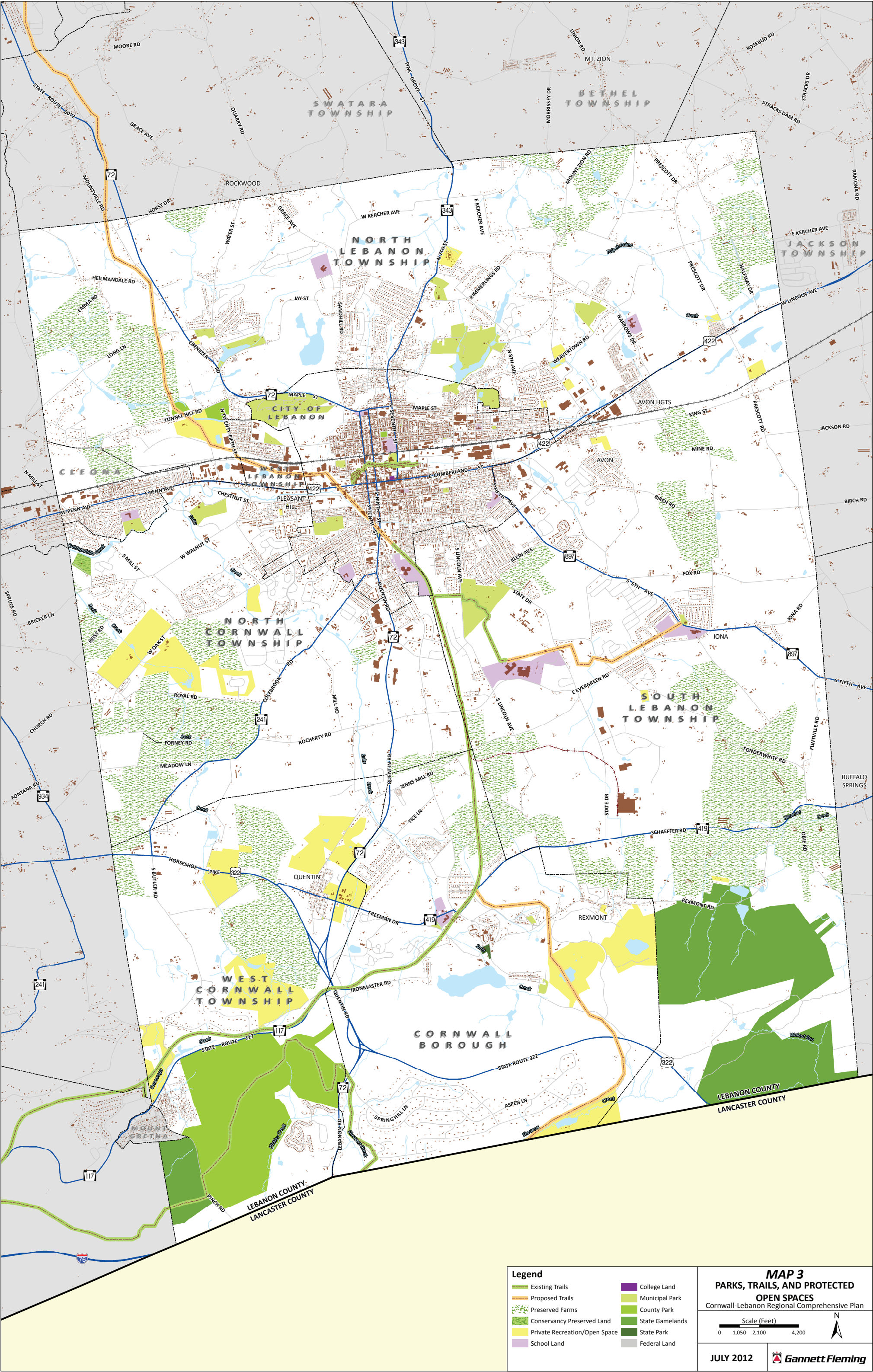
Data Sources: Watersheds were gathered from the Pennsylvania Spatial Data Access (PASDA) website. 100-Year floodplains were developed from the Lebanon County FEMA DFIRM database, effective 6/5/12. Carbonate geology was derived from the 1980 Geologic Map of Pennsylvania geospatial data layers available through PA DCNR. Sinkholes and surface depressions are a subset of data available from the PA Bureau of Topographic and Geologic Survey, DCNR. Surface mines, surface depressions, and sinkholes were catalogued by PA Geological Survey since 1985.





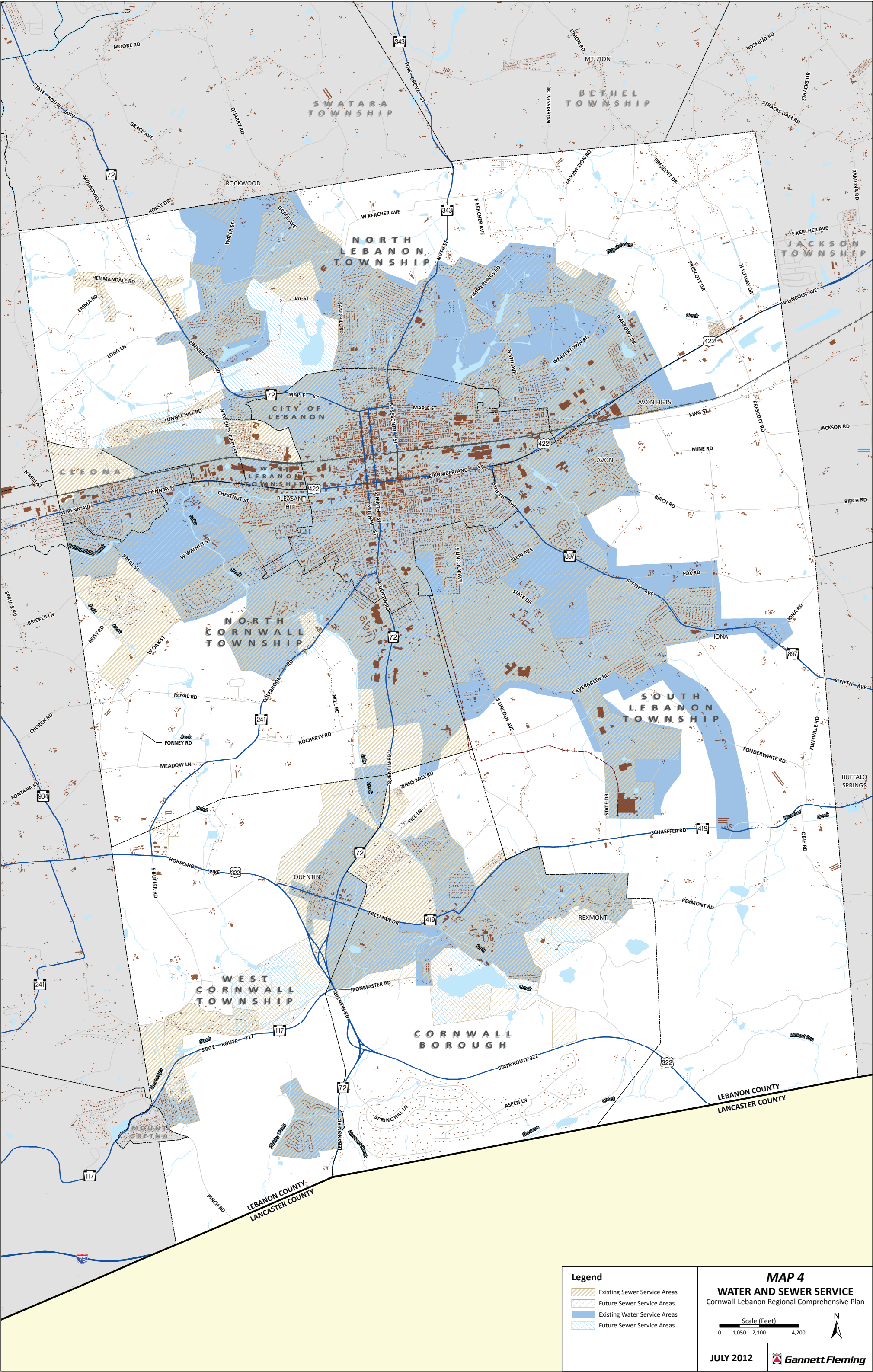
Data Sources: Lebanon County GIS provided updates to Gannett Fleming in March 2011. GIS layers outside of the current study area were compiled as part of the Lebanon County Comprehensive Plan in 2006.





Data Sources: Lebanon County GIS provided updates to Gannett Fleming in March 2011. GIS layers outside of the current study area were compiled as part of the Lebanon County Comprehensive Plan in 2006.

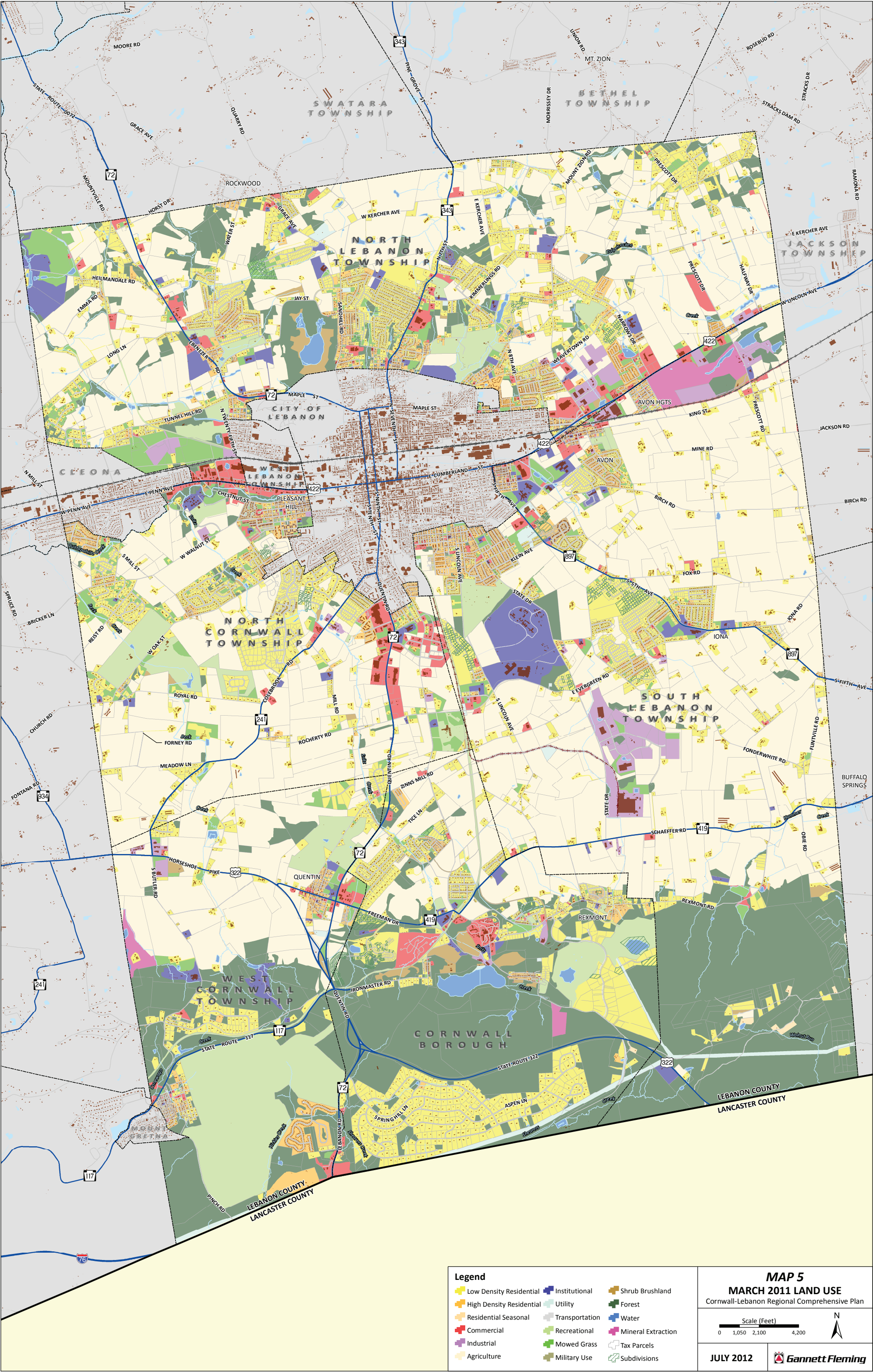




<b>Legend</b> <ul style="list-style-type: none"><li>Existing Sewer Service Areas</li><li>Future Sewer Service Areas</li><li>Existing Water Service Areas</li><li>Future Sewer Service Areas</li></ul>	<b>MAP 4</b> <b>WATER AND SEWER SERVICE</b> Cornwall-Lebanon Regional Comprehensive Plan	
	Scale (Feet) 0 1,050 2,100 4,200	
	JULY 2012	

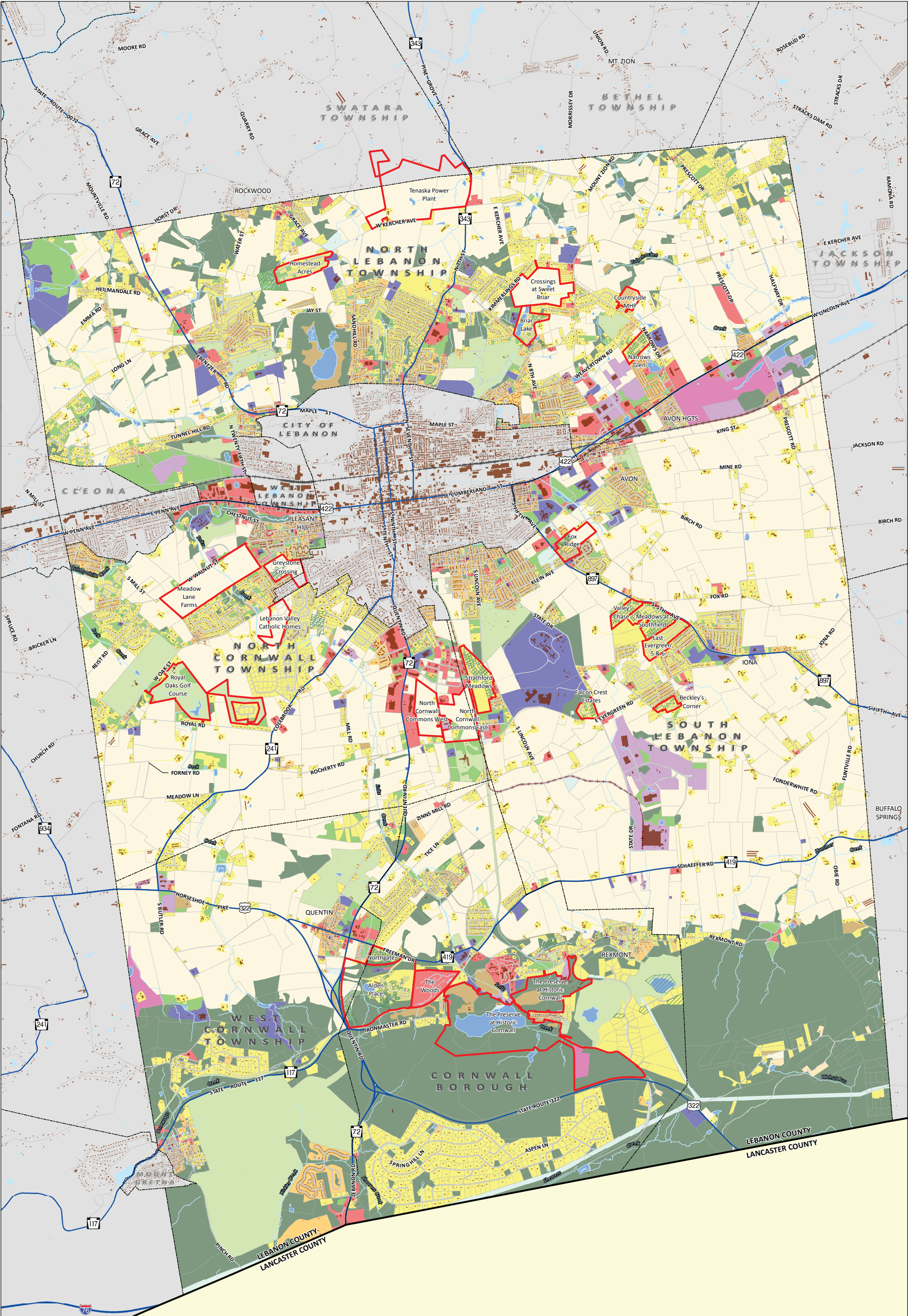
Data Sources: City of Lebanon Authority provided updates to their existing and future water service areas in January 2012. Lebanon County GIS provided updates to Gannett Fleming in March 2011. GIS layers outside of the current study area were compiled as part of the Lebanon County Comprehensive Plan in 2006.





Data Sources: Lebanon County GIS provided updates to Gannett Fleming in March 2011. Each participating municipality provided land use updates to Gannett Fleming that were incorporated into the 2006 land use data. GIS layers outside of the current study area were compiled as part of the Lebanon County Comprehensive Plan in 2006.





**Legend**

Approved and Proposed Developments	Institutional	Shrub Brushland
Low Density Residential	Utility	Forest
High Density Residential	Transportation	Water
Residential Seasonal	Recreational	Mineral Extraction
Commercial	Mowed Grass	Tax Parcels
Industrial	Military Use	Subdivisions
Agriculture		

**MAP 6**  
**PRE-MARKET DEVELOPMENT PROJECTS**  
**(ANTICIPATED, PROPOSED, AND APPROVED)**  
Cornwall-Lebanon Regional Comprehensive Plan

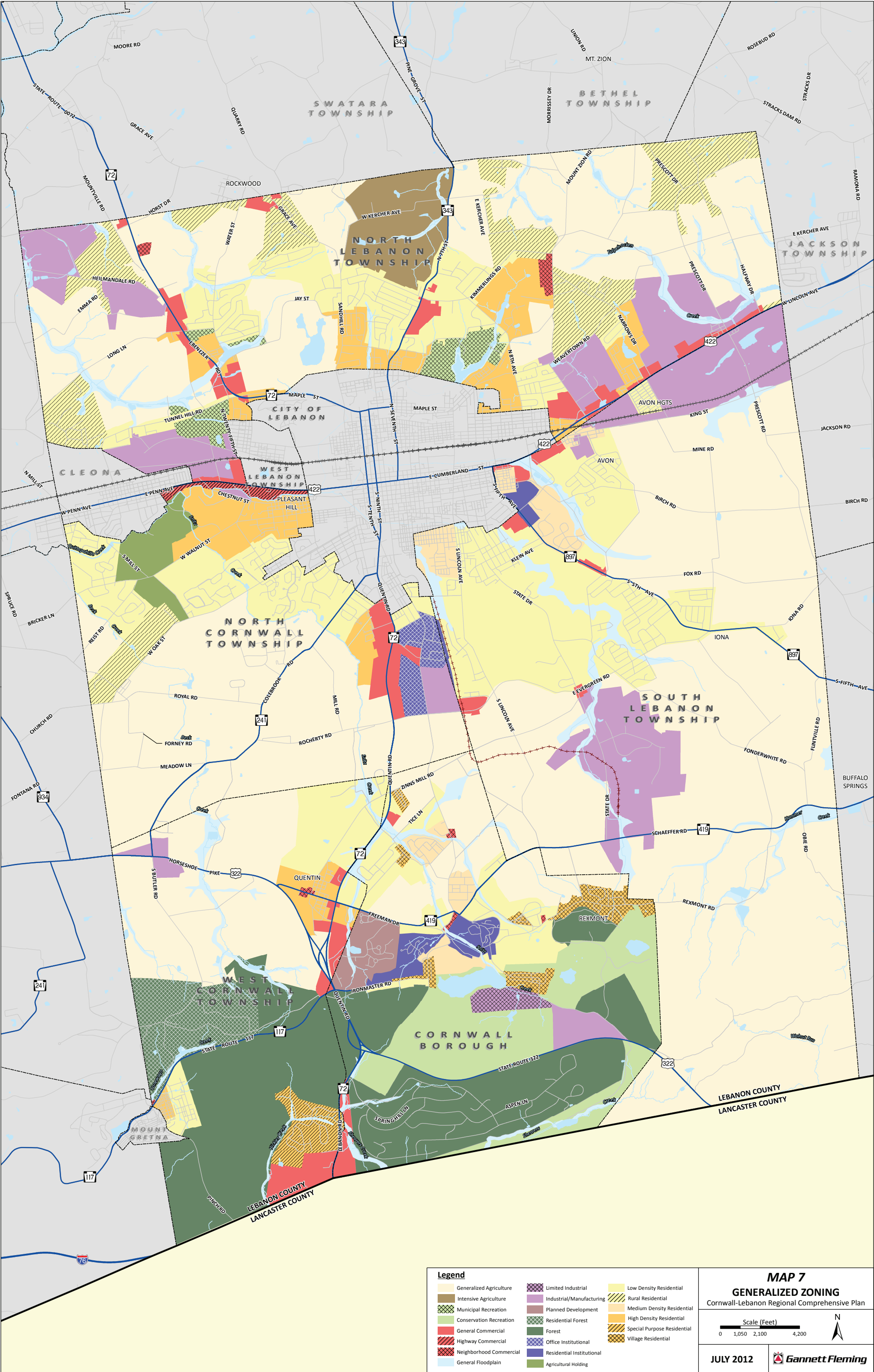
Scale (Feet)  
0 1,050 2,100 4,200

**JULY 2012**

**Gannett Fleming**

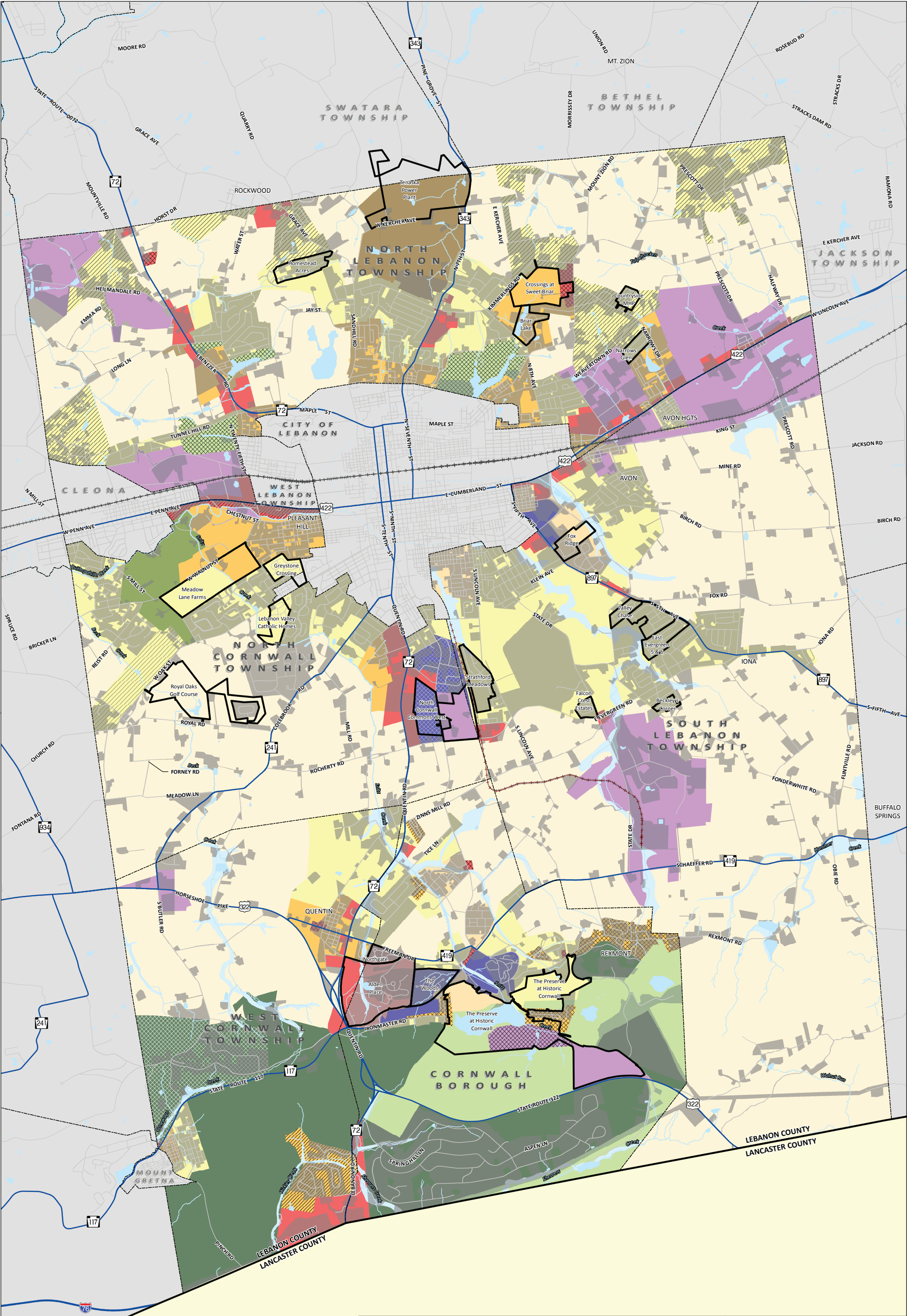
Data Sources: Lebanon County GIS provided updates to Gannett Fleming in March 2011. Each participating municipality provided land use updates to Gannett Fleming that were incorporated into the 2006 land use data. GIS layers outside of the current study area were compiled as part of the Lebanon County Comprehensive Plan in 2006.





Data Sources: Lebanon County GIS provided updates to Gannett Fleming in March 2011. GIS layers outside of the current study area were compiled as part of the Lebanon County Comprehensive Plan in 2006.





Legend

Proposed Developments

Developed Land

Generalized Agriculture

Intensive Agriculture

Municipal Recreation

Conservation Recreation

General Commercial

Highway Commercial

Neighborhood Commercial

General Floodplain

Limited Industrial

Industrial/Manufacturing

Planned Development

Residential Forest

Forest

Office Institutional

Residential Institutional

Agricultural Holding

Low Density Residential

Rural Residential

Medium Density Residential

High Density Residential

Special Purpose Residential

Village Residential

MAP 8

DEVELOPED VS. AVAILABLE ZONED LAND

Cornwall-Lebanon Regional Comprehensive Plan

Scale (Feet)

0 1,050 2,100 4,200

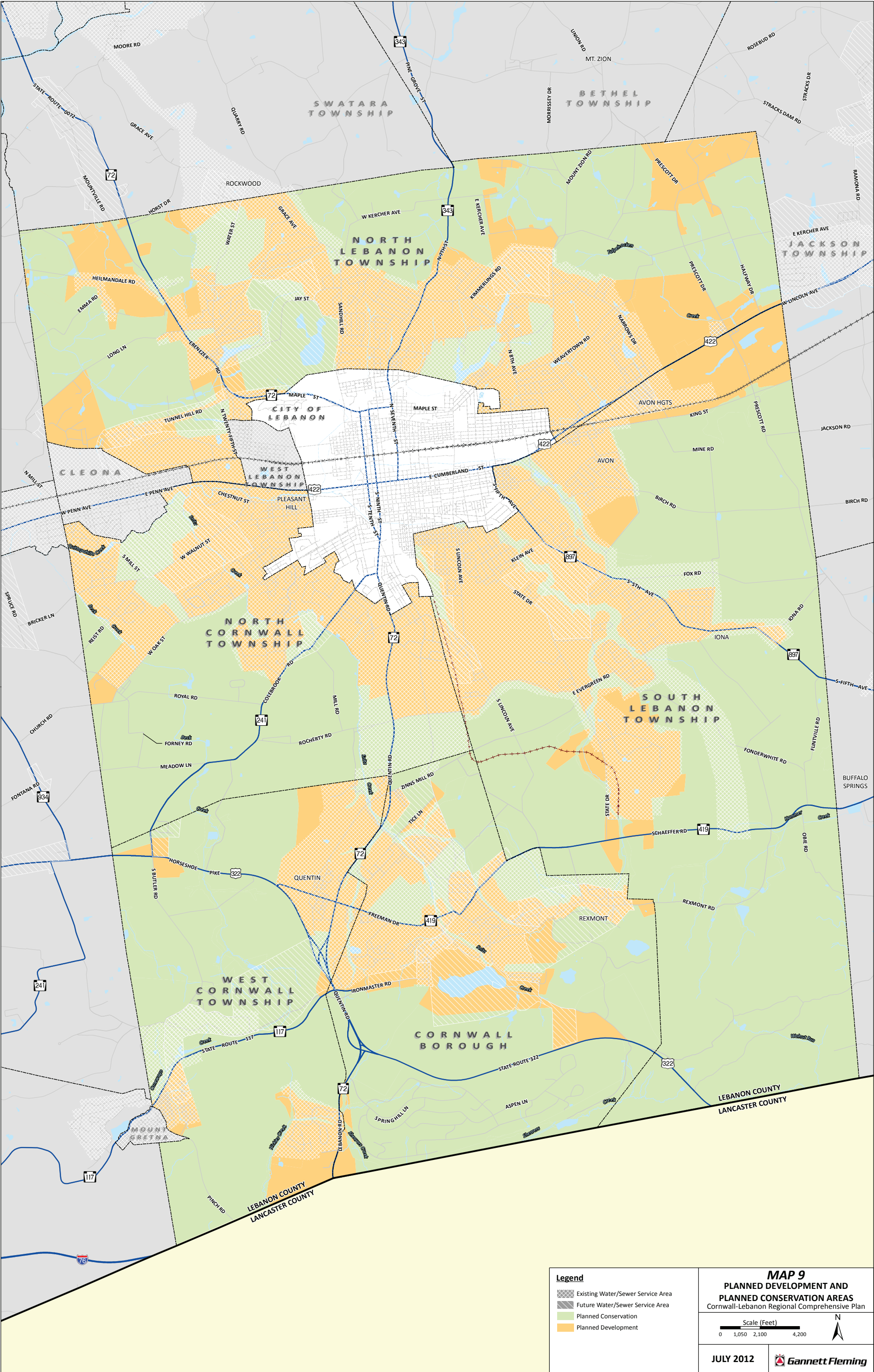
N

JULY 2012

Gannett Fleming

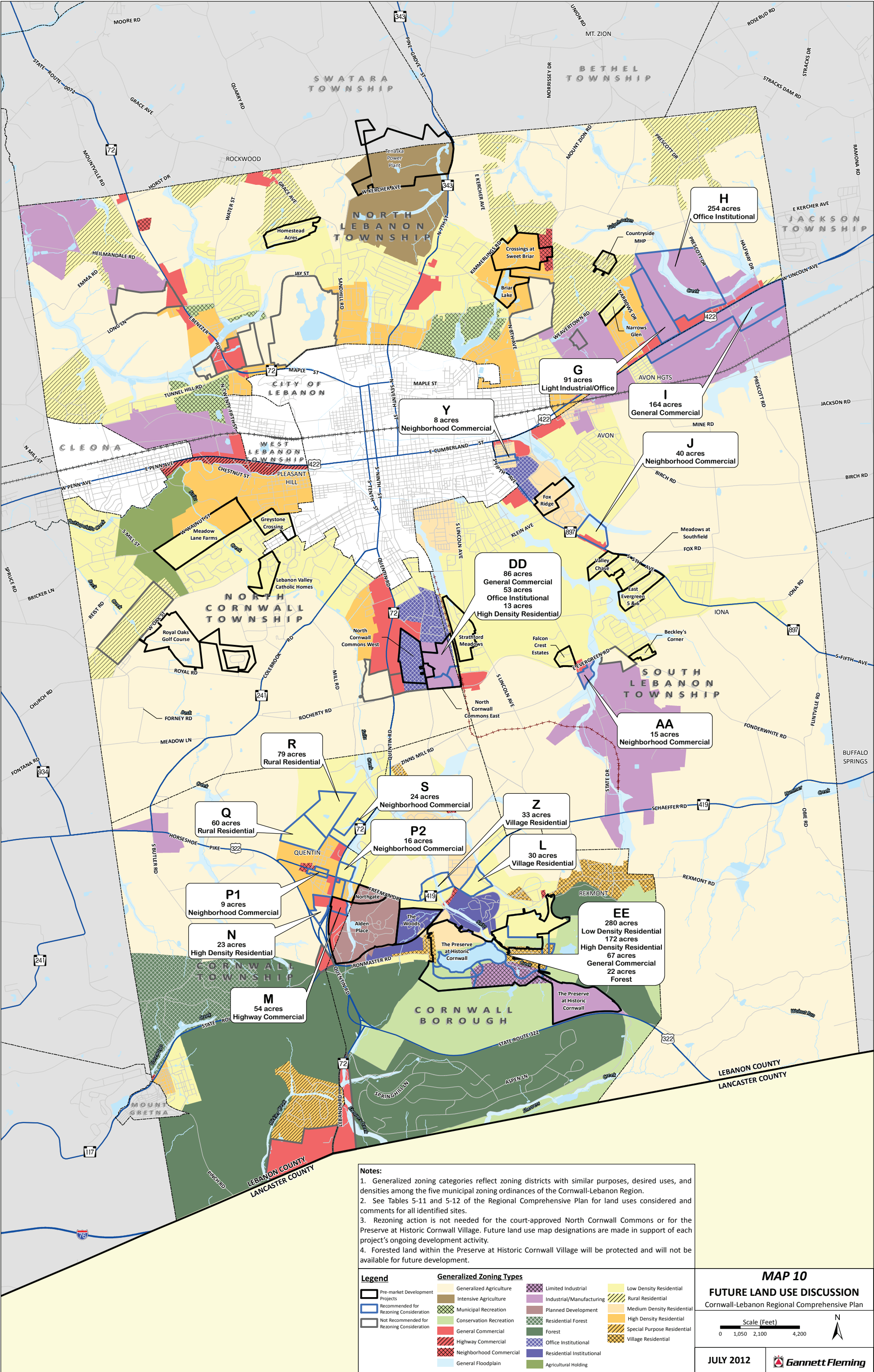
Data Sources: Lebanon County GIS provided updates to Gannett Fleming in March 2011. GIS layers outside of the current study area were compiled as part of the Lebanon County Comprehensive Plan in 2006.





Data Sources: City of Lebanon Authority provided updates to their existing and future water service areas in January 2012. Lebanon County GIS provided updates to Gannett Fleming in March 2011. GIS layers outside of the current study area were compiled as part of the Lebanon County Comprehensive Plan in 2006.





**Notes:**

1. Generalized zoning categories reflect zoning districts with similar purposes, desired uses, and densities among the five municipal zoning ordinances of the Cornwall-Lebanon Region.
2. See Tables 5-11 and 5-12 of the Regional Comprehensive Plan for land uses considered and comments for all identified sites.
3. Rezoning action is not needed for the court-approved North Cornwall Commons or for the Preserve at Historic Cornwall Village. Future land use map designations are made in support of each project's ongoing development activity.
4. Forested land within the Preserve at Historic Cornwall Village will be protected and will not be available for future development.

Legend		
Pre-market Development Projects	Generalized Agriculture	Limited Industrial
Recommended for Rezoning Consideration	Intensive Agriculture	Industrial/Manufacturing
Not Recommended for Rezoning Consideration	Municipal Recreation	Planned Development
	Conservation Recreation	Residential Forest
	General Commercial	Forest
	Highway Commercial	Office Institutional
	Neighborhood Commercial	Residential Institutional
	General Floodplain	Agricultural Holding
		Low Density Residential
		Rural Residential
		Medium Density Residential
		High Density Residential
		Special Purpose Residential
		Village Residential

**MAP 10**

**FUTURE LAND USE DISCUSSION**

Cornwall-Lebanon Regional Comprehensive Plan

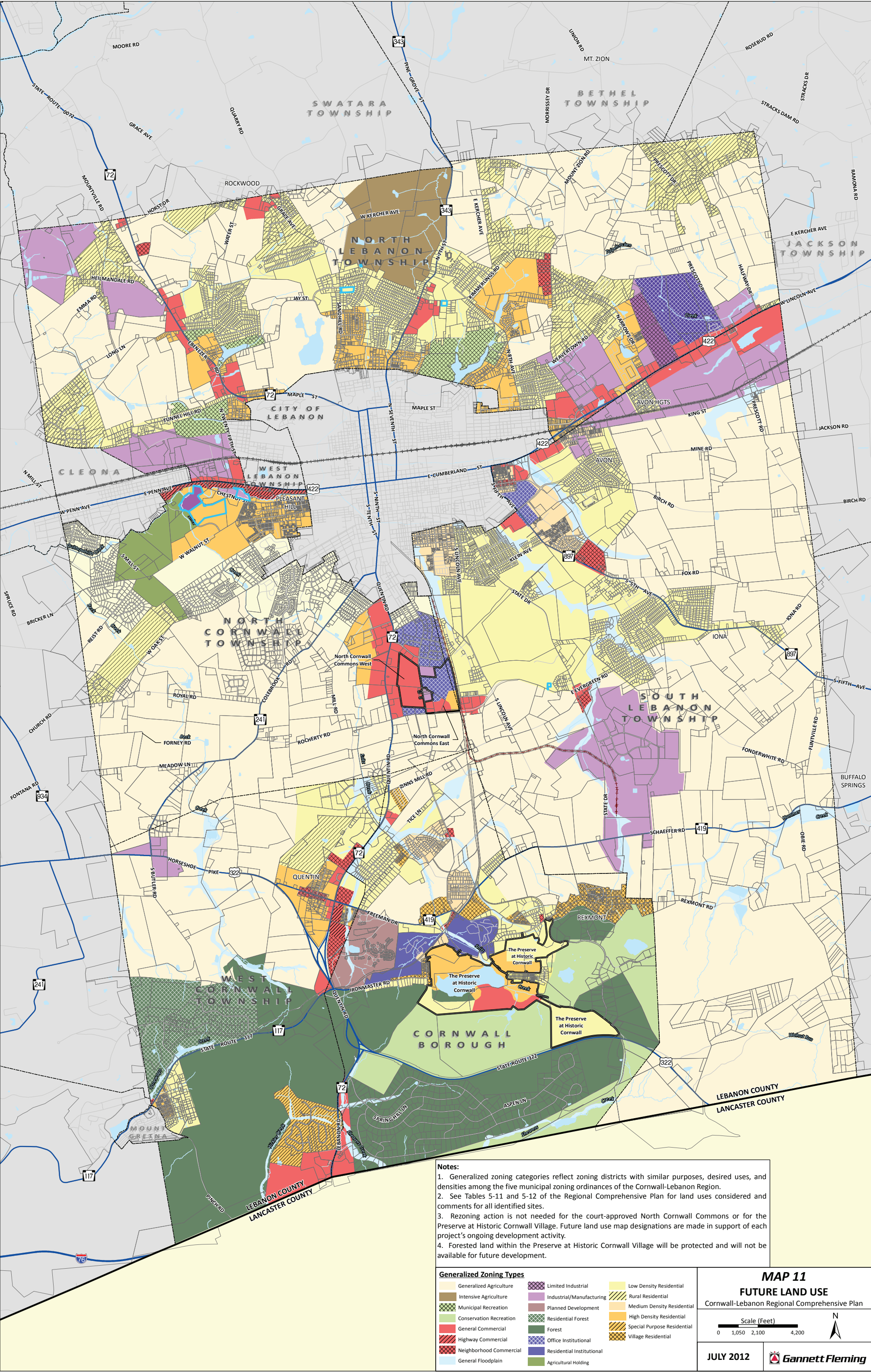
Scale (Feet)

0 1,050 2,100 4,200

N

JULY 2012





- Notes:**
1. Generalized zoning categories reflect zoning districts with similar purposes, desired uses, and densities among the five municipal zoning ordinances of the Cornwall-Lebanon Region.
  2. See Tables 5-11 and 5-12 of the Regional Comprehensive Plan for land uses considered and comments for all identified sites.
  3. Rezoning action is not needed for the court-approved North Cornwall Commons or for the Preserve at Historic Cornwall Village. Future land use map designations are made in support of each project's ongoing development activity.
  4. Forested land within the Preserve at Historic Cornwall Village will be protected and will not be available for future development.

Generalized Zoning Types			
Generalized Agriculture	Limited Industrial	Low Density Residential	
Intensive Agriculture	Industrial/Manufacturing	Rural Residential	
Municipal Recreation	Planned Development	Medium Density Residential	
Conservation Recreation	Residential Forest	High Density Residential	
General Commercial	Forest	Special Purpose Residential	
Highway Commercial	Office Institutional	Village Residential	
Neighborhood Commercial	Residential Institutional		
General Floodplain	Agricultural Holding		

**MAP 11**

**FUTURE LAND USE**

Cornwall-Lebanon Regional Comprehensive Plan

Scale (Feet)

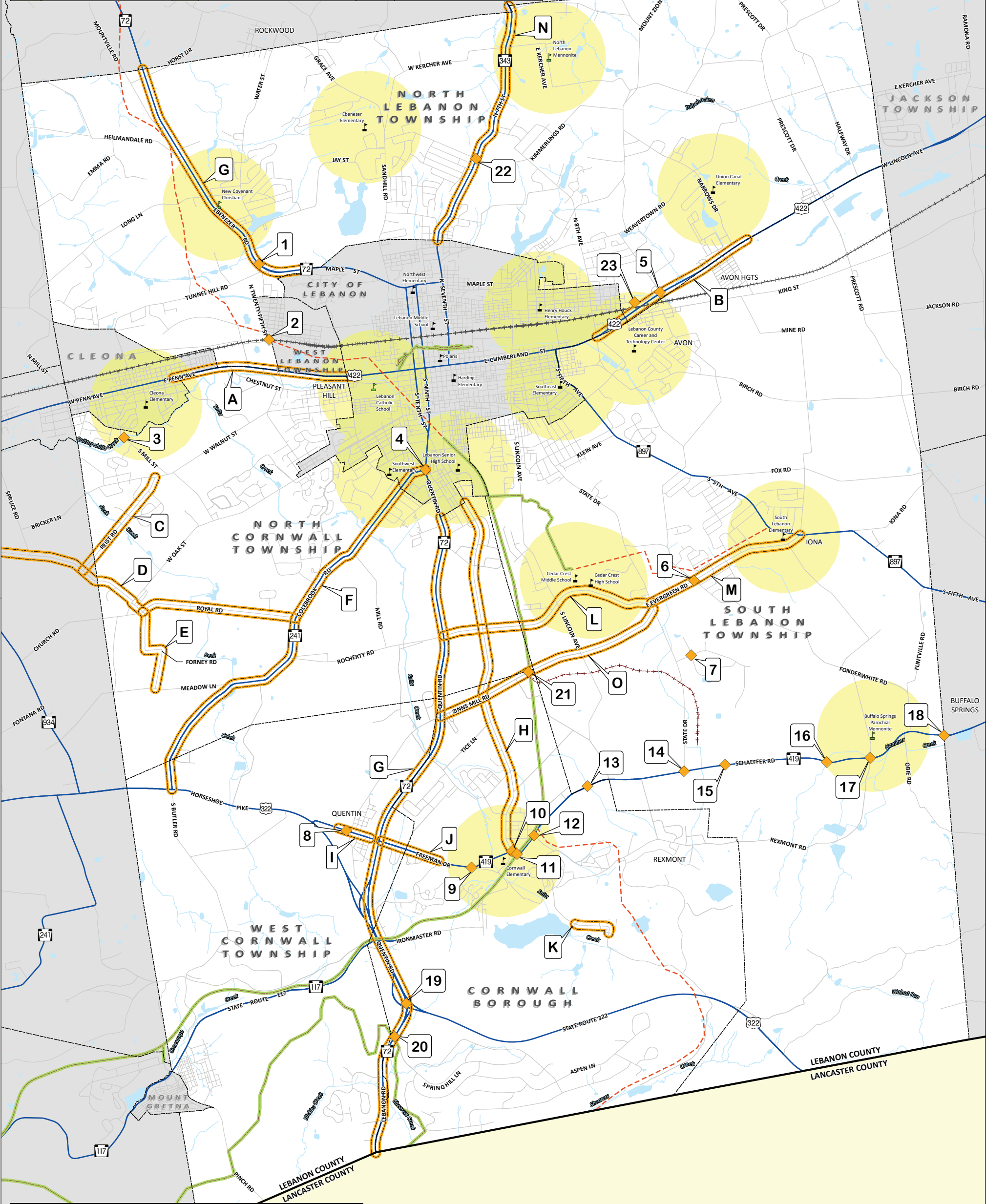
0 1,050 2,100 4,200

N

JULY 2012



1	Site Concern	Site Concern	Site Concern
1	Truck traffic concerns	9	Sharp sight angle to the east from Alden Street
2	Single lane underpass/tunnel	10	Angled intersection at Cornwall Rd., Burd Coleman Rd. and PA 419
3	2 single lane bridges	11	Rail Trail Crossing
4	No signal attenuation for cyclists	12	Crest blocks view to the east
5	Poor traffic circulation at Walmart	13	Poor drainage on PA 419
6	Safety concerns	14	Increased industrial park truck traffic
7	Increased industrial park truck traffic	15	Crest blocks view to the east
8	Dip/crest blocks view from side streets and on-street	16	Curve/Embankment blocks views east and west
		17	Curve/Embankment and house block views east and west
		18	Curve/Embankment and house block views east and west
		19	Difficult left turn
		20	Poor sight distance
		21	Bridge gap
		22	Limited sight distance
		23	No sidewalk



A	Corridor Concern	Corridor Concern	Corridor Concern
A	Proposed gateway	F	Narrow shoulder
B	Moderate congestion	G	Congested corridor
C	No shoulder	H	Increasing traffic volumes; declining cyclist cond
D	No shoulder	I	Poor sidewalks
E	No shoulder	J	No sidewalks
		K	Poor sidewalk conditions
		L	Peak period congestion
		M	Poor shoulder for cyclists
		N	Shoulder conditions; safety concerns
		O	Possible east-west congestion alternate

**Legend**

- Private School
- Public School
- Existing Trails
- Proposed Trails
- Transportation Sites of Concern
- Transportation Corridors of Concern
- School Bike/Ped Service Areas

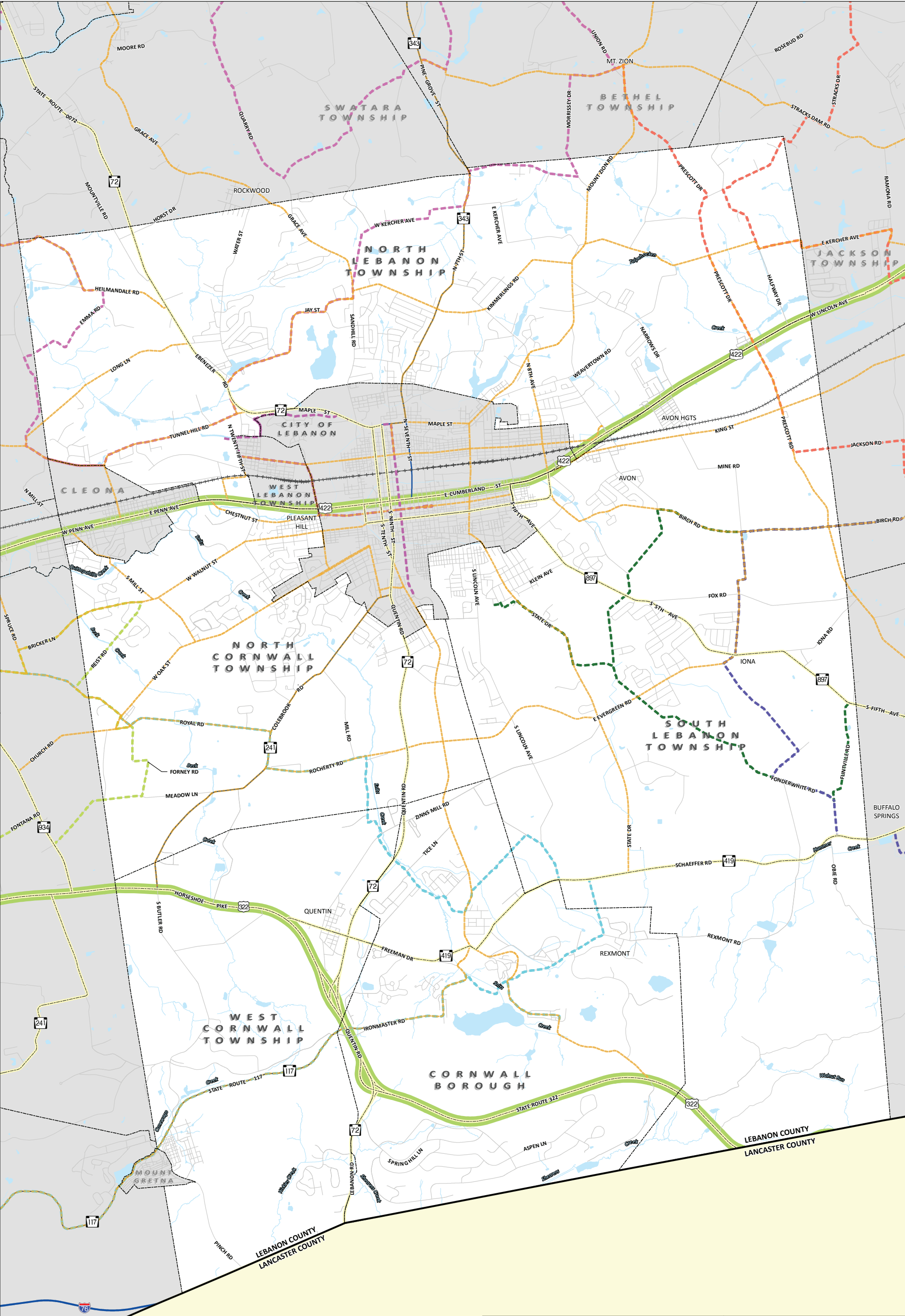
**MAP 12**  
**TRANSPORTATION ISSUES AND CONCERNS**  
Cornwall-Lebanon Regional Comprehensive Plan

Scale (Feet)  
0 1,050 2,100 4,200

JULY 2012

Gannett Fleming





**Legend**

Regional Bike Routes

Collector Bike Routes

Heritage Trails

**Bike Routes**

Amish and Mennonite Farms

Conserving Lands and Heritage

Cycling Lebanon Valley Vistas

Horses and Creeks

Lebanons Gaps and Valleys

Lebanons Historic Gems

Preserved Farms Loop

Silos, Spires and Soaring Birds

The Coleman Legacy

Union Canal and The Swatties

**MAP 13**

**SPECIALIZED TRAVEL ROUTES**

Cornwall-Lebanon Regional Comprehensive Plan

Scale (Feet)

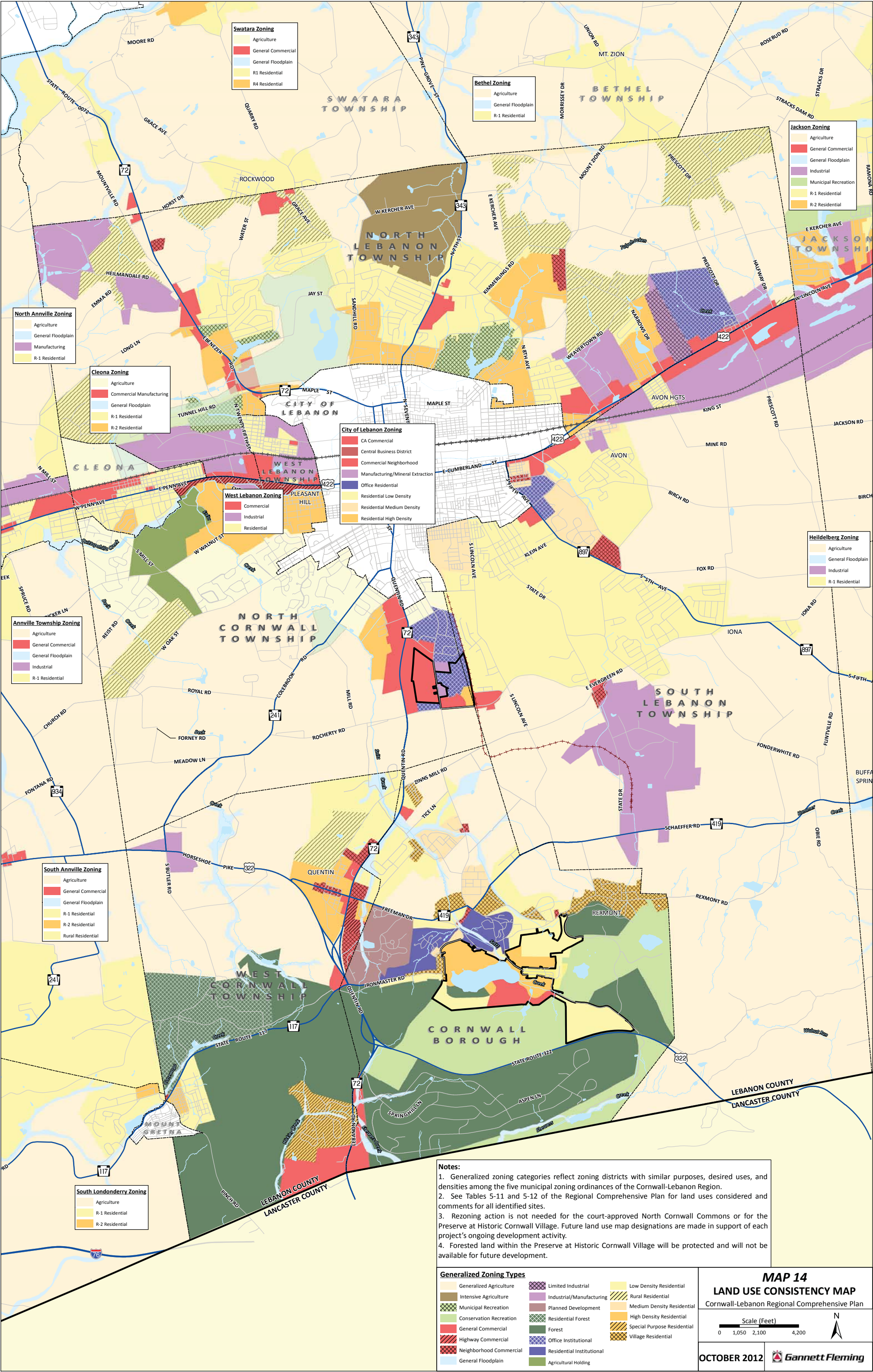
0 1,050 2,100 4,200

**JULY 2012**

**Gannett Fleming**

Data Sources: Lebanon County GIS provided updates to Gannett Fleming in March 2011. GIS layers outside of the current study area were compiled as part of the Lebanon County Comprehensive Plan in 2006.





Data Sources: Lebanon County GIS provided updates to Gannett Fleming in March 2011. GIS layers outside of the current study area were compiled as part of the Lebanon County Comprehensive Plan in 2006. Revised zoning districts for North and South Lebanon Townships were received in October 2012 and incorporated on this map. Future land use recommendations made by Gannett Fleming are illustrated on this map.