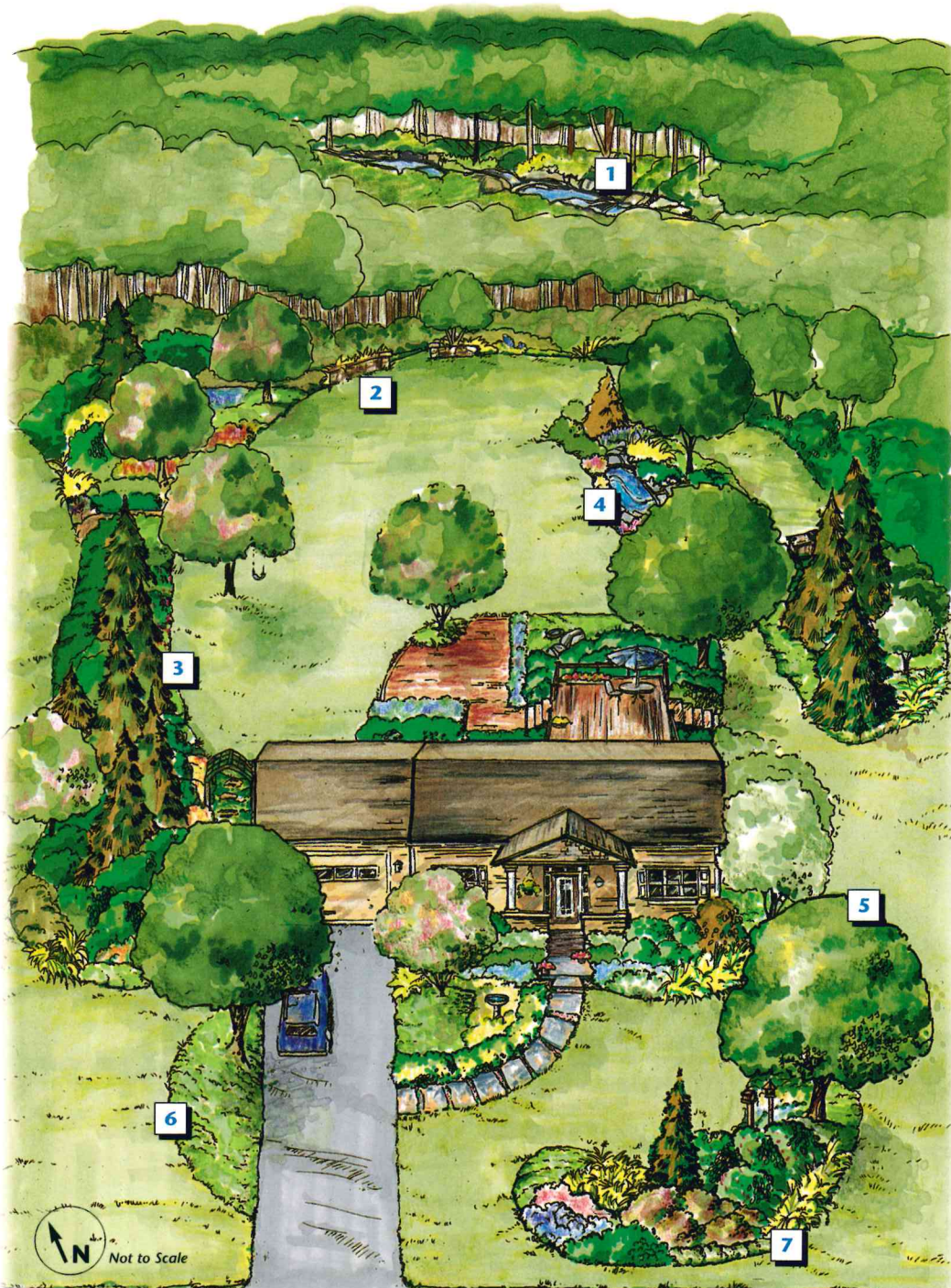




Homeowners' Guide to Designing Your Property

This guide is designed to help you implement the concepts of BayScaping in your own yard. The enlargements on the inside pages show plant types and quantities for different areas of the property. The back page features a plant list for you to use to install this design.



Many BayScapes principles are illustrated in the features of this yard design.

1. Streambank Plantings:

water-loving trees, shrubs and perennial plants protect streambank from soil erosion.

2. Dry Laid Stone Wall:

provides habitat for small mammals.

3. Buffer Plantings:

screen winter winds; create wildlife habitat and corridors.

4. Water Garden:

provides water for wildlife.

5. Trees:

provide shade, reduce water runoff and clean the air.

6. Groundcovers:

reduce lawn and are perfect for sloped and rarely utilized areas.

7. Planting Islands:

add privacy and habitat, reducing high-maintenance lawns.

1/4 – 1/2 acre lot

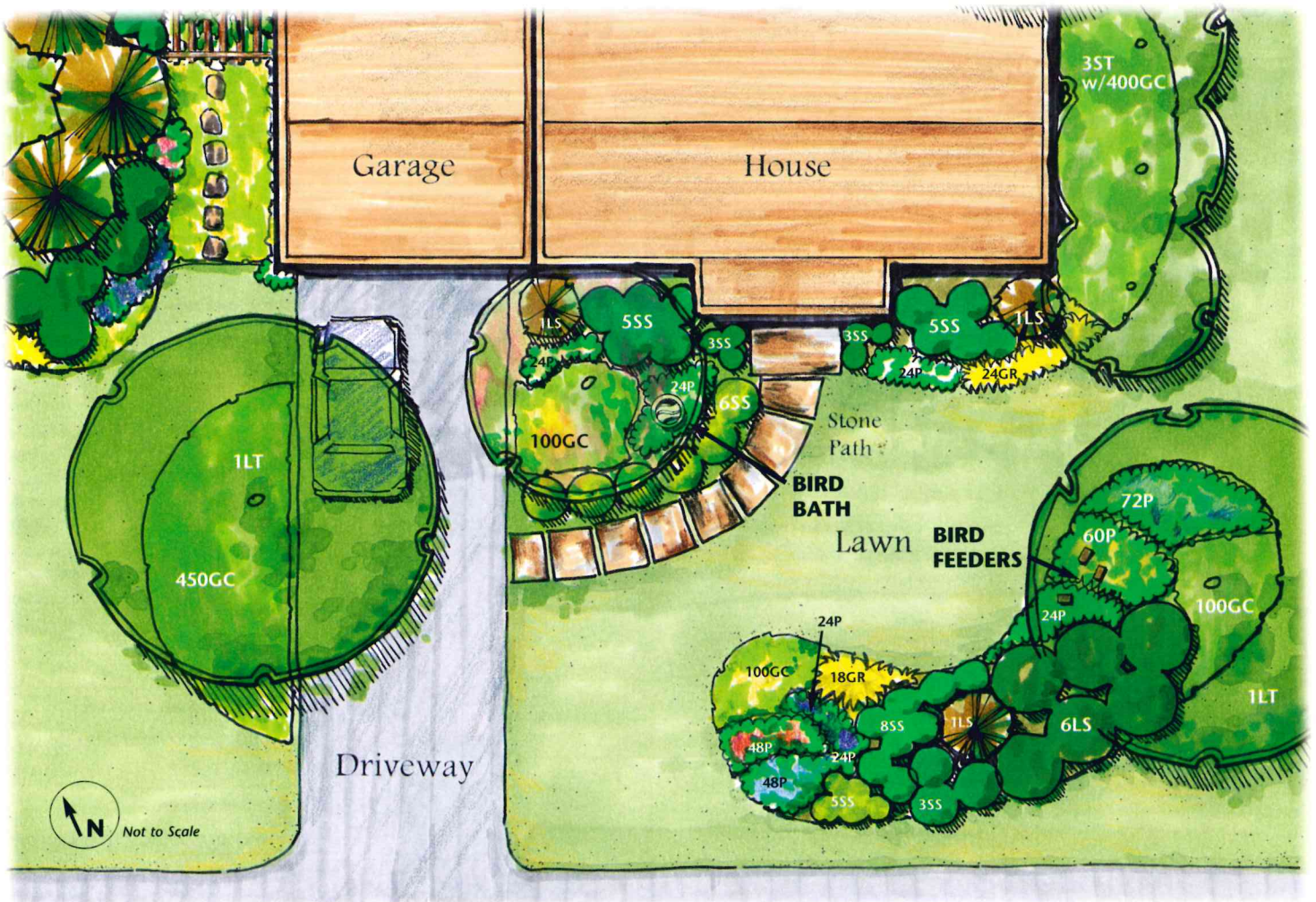
These planting plans are examples of how to landscape using BayScapes principles.

BayScapes Principles

Plan for the Long Term • Create Diversity • Use Beneficial Plants • Conserve Water • Practice Conservation Landscaping

Front Yard

Planting islands feature plantings layered or integrated with a mix of trees, shrubs and groundcovers to reduce lawnmowing, fertilizer, herbicide and pesticide use. These islands also provide year-round beauty and homes for birds and other wildlife. A variety of native trees and shrubs should be used in combination with long-blooming perennials and groundcovers. *Bird feeders* and *bird baths* can be added to attract birds.



LEGEND

LT = Large Tree
ST = Small Tree
ET = Evergreen Tree
LS = Large Shrub

SS = Small Shrub
P = Perennial
GC = Groundcover
GR = Grass

- The numbers indicate a general quantity of plants to be installed.
- Use the spacing chart to determine the exact quantity of plants for your garden area.
- Use the plant list to help you choose your plants.

Back Yard and Water Garden

The back yard features spaces for human enjoyment as well as wildlife habitat:

The **deck and patio** provide seating space for enjoyment of the back yard. Plantings include one large tree and a small tree to provide shade at differing heights. Groupings of large and small shrubs, perennials and groundcovers soften the structures.

The **water garden** is a visual focal point and a water source for wildlife. Groupings of evergreen and deciduous plants ensure interest in every season.

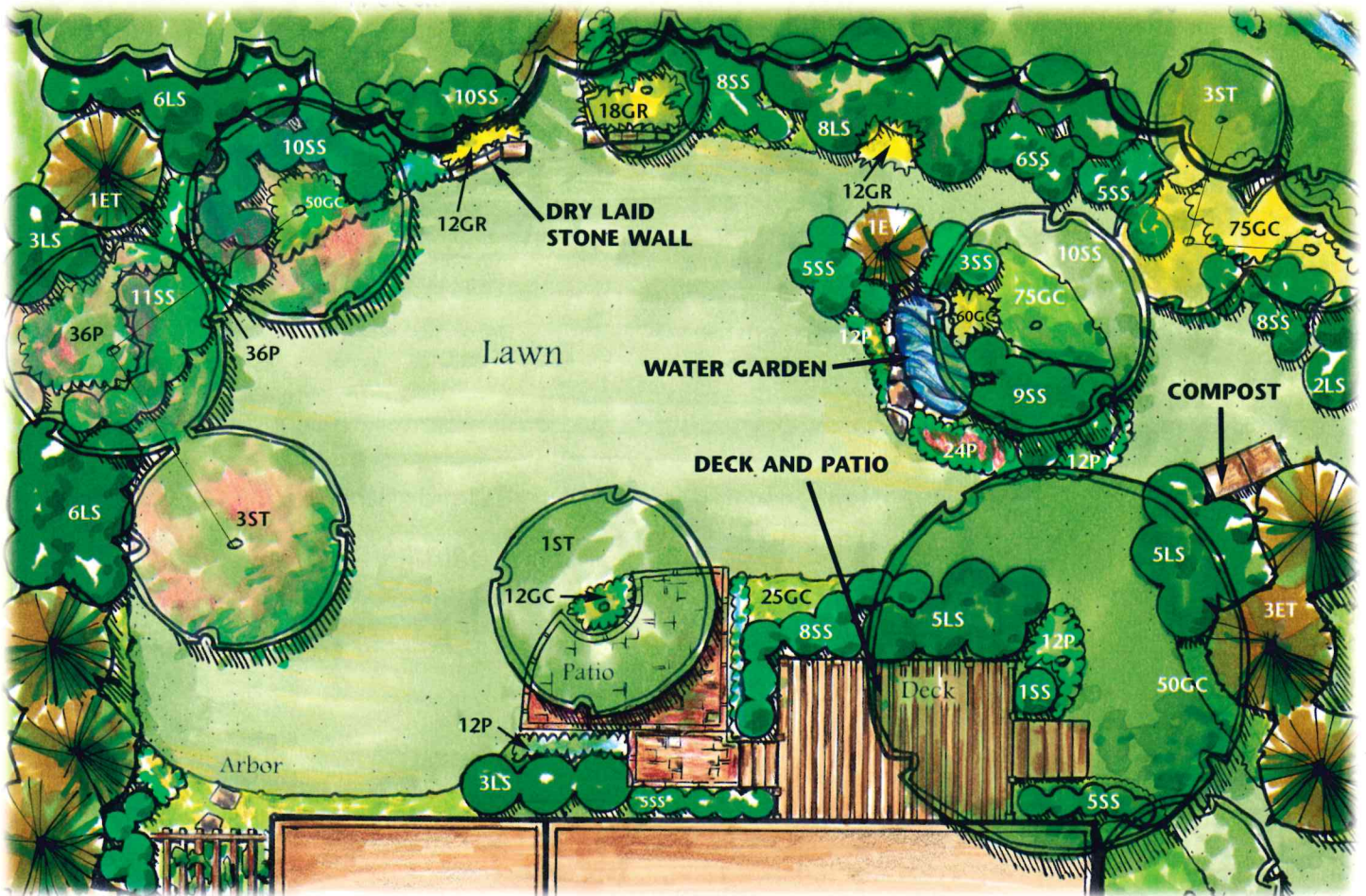
The **compost bin** allows recycling of kitchen and yard waste (including leaves), creating homemade organic fertilizer. Adding compost to planting beds replenishes nutrients without using synthetic fertilizers. Compost also enriches the soil to better support plants.

LEGEND

LT = Large Tree
ST = Small Tree
ET = Evergreen Tree
LS = Large Shrub

SS = Small Shrub
P = Perennial
GC = Groundcover
GR = Grass

- The numbers indicate a general quantity of plants to be installed.
- Use the spacing chart to determine the exact quantity of plants for your garden area.
- Use the plant list to help you choose your plants.



Side Yard Planting Screen

Groupings of beneficial plants create a privacy screen while blocking cold winter winds. The evergreen plantings provide nesting habitat. Consider teaming with your neighbors to plant a wider border to increase these benefits and make a corridor for wildlife to move between the properties. **Stepping stones** allow you to walk among the groundcovers. The **arbor** provides a place for climbing vines, which attract bees, butterflies and hummingbirds.

Reduce lawn areas with the use of groundcovers such as moss for shady areas or thyme for sunny areas.

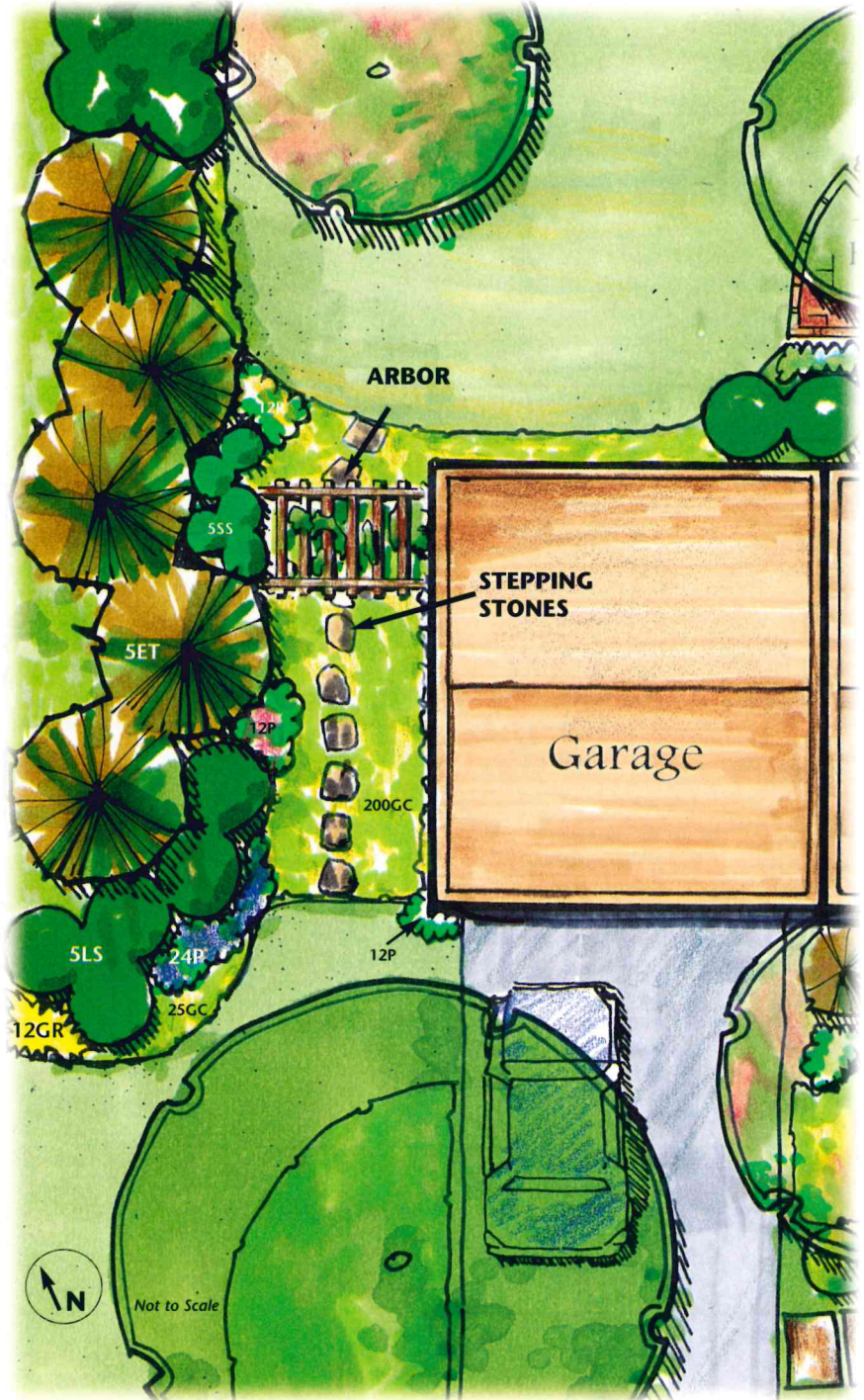
Tree and Shrub Spacing

When planning for tree and shrub plantings, consider their ultimate spread. Allow that distance between the trunks of the two plants.

Perennial and Groundcover Spacing

Perennials and groundcovers need to be spaced according to their ultimate size. To determine how many plants you will need, multiply the number of square feet by the number of plants required per square foot using this table. Distance apart is measured from the center of the plant.

Distance Apart	Plants/Sq. Ft.
4"	9.1
6"	2.5
8"	2.25
9"	1.77
10"	1.44
12"	1.00
18"	0.45
24"	0.24
36"	0.11



LEGEND

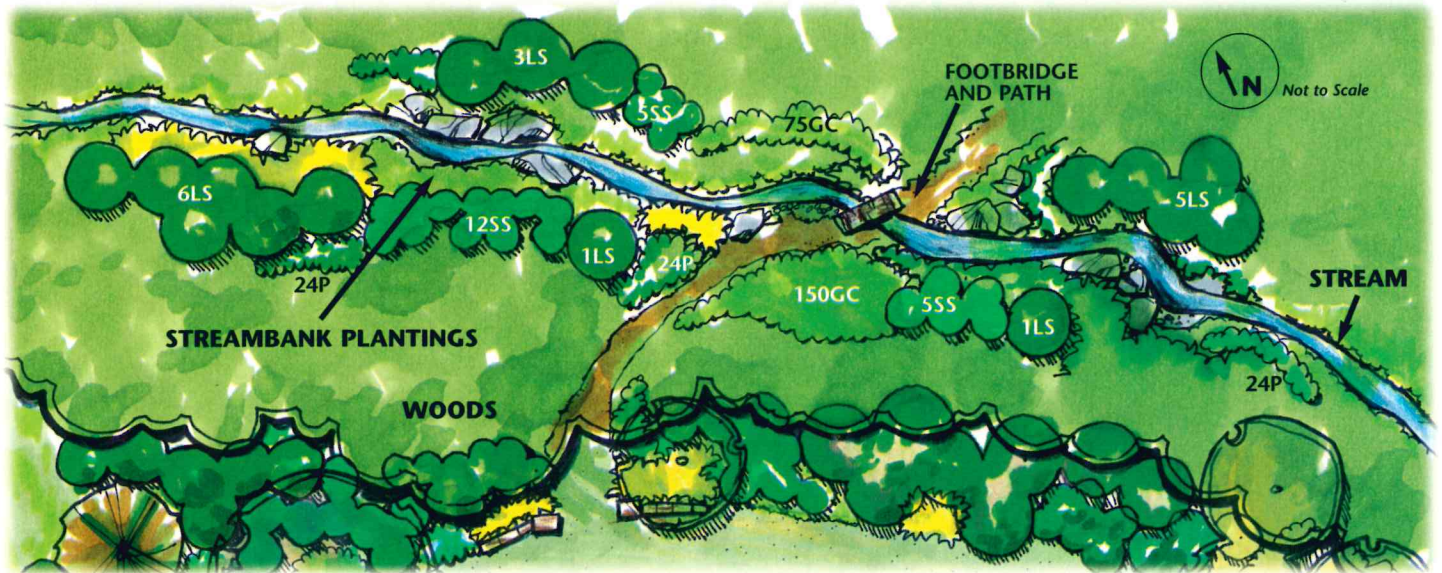
LT = Large Tree
ST = Small Tree
ET = Evergreen Tree
LS = Large Shrub

SS = Small Shrub
P = Perennial
GC = Groundcover
GR = Grass

- The numbers indicate a general quantity of plants to be installed.
- Use the spacing chart to determine the exact quantity of plants for your garden area.
- Use the plant list to help you choose your plants.

Stream Buffer Planting

Planting native trees, shrubs and perennials next to streams protects the water from soil erosion and nutrient runoff. Stream buffers protect water quality by absorbing and filtering runoff from lawns and open spaces before it reaches the water. **Streambank or "riparian" plantings** also create aquatic habitat for bugs and fish by providing shade and places to hide.



LEGEND

LT = Large Tree

ST = Small Tree

ET = Evergreen Tree

LS = Large Shrub

SS = Small Shrub

P = Perennial

GC = Groundcover

GR = Grass

- The numbers indicate a general quantity of plants to be installed.

- Use the spacing chart to determine the exact quantity of plants for your garden area.

- Use the plant list to help you choose your plants.



For more information, additional Homeowners' Guides, native plant lists, and/or more BayScapes information, please visit our website at:



Call the Alliance for the Chesapeake Bay at:

Harrisburg, PA 717-737-8622

Baltimore, MD 410-377-6270

Richmond, VA 804-775-0951



This publication was funded by the USDA Forest Service through the Chesapeake Bay Program Forestry Workgroup and the Pennsylvania Department of Conservation and Natural Resources, Bureau of Forestry.

This guide was developed by the The Alliance for the Chesapeake Bay. Landscape plans designed and rendered by Zolna Environmental Design, Baltimore, MD. Graphic design by Melinda Russell Design (mr@mrdcreative.com). © 2007

Beneficial Plants for BayScaping in the Chesapeake Bay Region

This plant list is a guide to help you install your landscape plan. There are many more native plants that are suitable for BayScaping. Be careful to avoid invasive plants. Consult native plant lists for your region or your local nursery or agricultural extension agent for additional plants which may fit into your landscape.

LARGE TREE	BOTANICAL NAME	REGION	HEIGHT	BLOOM/FRUIT	SUN/SHADE	DRY/WET	VALUE
Red maple	<i>Acer rubrum</i>	all	75' – 100'	red bloom	sun – ps	w – d	very high wildlife, buffer
River birch	<i>Betula nigra</i>	piedmont & coastal	50' – 75'	catkin flower	ps – fs	w – m	wildlife, buffer, ornamental
Red or green ash	<i>Fraxinus pennsylvanica</i>	piedmont & coastal	50' – 75'		sun	m	buffer
Sweet gum	<i>Liquidambar styraciflua</i>	piedmont & coastal	50' – 75'	ornamental capsule	sun	m – w	wildlife, ornamental
Tuliptree	<i>Liriodendron tulipifera</i>	all	75' – 100'	yellow-green bloom	sun	d – m	buffer, ornamental
Black gum	<i>Nyssa sylvatica</i>	all	50' – 75'		sun – ps	d	ornamental, high wildlife
White oak	<i>Quercus alba</i>	all	75' – 100'	acorn fruit	sun	d – m	very high wildlife
SM. TREE/LG. SHRUB	BOTANICAL NAME	REGION	HEIGHT	BLOOM/FRUIT	SUN/SHADE	DRY/WET	VALUE
Shadblow serviceberry	<i>Amelanchier canadensis</i>	all	20' – 30'	deep black, edible fruit	sun – ps	d – m	very high wildlife, buffer
Eastern redbud	<i>Cercis canadensis</i>	mountains & piedmont	20' – 30'	pinkish bloom	sun – fs	d – m	ornamental
Flowering dogwood	<i>Cornus florida</i>	all	10' – 30'	white bloom/scarlet berries	sun – ps	d – m	wildlife, ornamental
Winterberry holly	<i>Ilex verticillata</i>	all	6' – 12'	red-berried fruit	ps	m – w	wildlife, ornamental
Witch hazel	<i>Hamamelis virginiana</i>	all	20' – 35'	yellow bloom-in fall	sun – ps	d	ornamental, borders
Northern bayberry	<i>Myrica pensylvanica</i>	piedmont & coastal	6' – 12'	waxy gray fruit	ps	d – w	high wildlife
Common elderberry	<i>Sambucus canadensis</i>	all	6' – 12'	white bloom/purple fruit	sun – fs	d – w	very high wildlife
Highbush blueberry	<i>Vaccinium corymbosum</i>	all - acid soil	3' – 10'	dark blue fruit	sun – fs	d – m	high wildlife, ornamental
Southern arrowwood	<i>Viburnum dentatum</i>	piedmont & coastal	6' – 12'	bluish-black fruit	sun – fs	m – w	wildlife, buffer, ornamental
EVERGREEN TREE/SHRUB	BOTANICAL NAME	REGION	HEIGHT	BLOOM/FRUIT	SUN/SHADE	DRY/WET	VALUE
American holly	<i>Ilex opaca</i>	coastal	30' – 50'	red berry	sun – ps	m	cover, high wildlife, orn.
Common juniper	<i>Juniperus communis</i>	all	2' – 30'	blue-black berry	sun	d	cover, high wildlife,
Eastern red cedar	<i>Juniperus virginiana</i>	piedmont & coastal	50' – 75'	blue-green berry	sun	d	very high wildlife
Eastern white pine	<i>Pinus strobus</i>	mountains & piedmont	75' – 100'	five-needled bundle	sun	d	high wildlife, buffer
SMALL SHRUBS	BOTANICAL NAME	REGION	HEIGHT	BLOOM/FRUIT	SUN/SHADE	DRY/WET	VALUE
Bearberry	<i>Arctostaphylos urva-ursi</i>	mountains & piedmont	1'	red berries	ps	d	ornamental
Fothergilla	<i>Fothergilla gardenii</i>	all	3' – 5'	white bottlebrush flowers	sun – fs	m – w	ornamental
Inkberry holly	<i>Ilex glabra "Shamrock"</i>	all	4' – 6'	black berry	ps	d – w	evergreen, cover
Compact Oregon grapeholly	<i>Mahonia aquifolium "Compacta"</i>	all	2' – 3'	yellow flower, blue berries	ps – fs	m – w	evergreen, ornamental
Pinxterbloom azalea	<i>Rhododendron periclymenoides</i>	mountains - acid soil	6'	pink bloom	ps	m – w	ornamental
PERENNIAL	BOTANICAL NAME	REGION	HEIGHT	BLOOM/FRUIT	SUN/SHADE	DRY/WET	VALUE
Wild columbine	<i>Aquilegia canadensis</i>	all	8" – 24"	red & yellow flowers	sun – fs	d – m	wildlife, ornamental
Swamp milkweed	<i>Asclepias incarnata</i>	all	2' – 5'	pink-red flowers	sun – fs	m – w	wildlife, buffer
Butterfly weed	<i>Asclepias tuberosa</i>	all	1' – 3'	yellow to red flowers	sun	d	wildlife, ornamental
New England aster	<i>Aster novae-angliae</i>	all	3' – 4'	pink to violet flowers	sun	m	wildlife, ornamental
Tickseed	<i>Coreopsis verticillata</i>	all	1'	yellow flowers	fs	d – m	long flowering ornamental
Wild bleeding heart	<i>Dicentra eximia</i>	mountains & piedmont	8' – 12'	pink flowers	ps – fs	m	ornamental
Purple coneflower	<i>Echinacea purpurea</i>	all	2' – 3'	pink flower/seed heads	sun	d	wildlife, ornamental
Mistflower	<i>Eupatorium coelestinum</i>	all	3' – 4'	violet-blue flowers	fs	m – w	wildlife, buffer, ornamental
Joe-pye-weed	<i>Eupatorium fistulosum</i>	all	5' – 10'	pink-purple flowers	sun	m – w	wildlife, buffer, ornamental
Wild geranium	<i>Geranium maculatum</i>	mountains & piedmont	1' – 2'	rose-purple flowers	sun	m	ornamental
Gayfeather	<i>Liatris spicata</i>	all	2'	purple flower spikes	sun	d	ornamental, wildlife
Black-eyed susan	<i>Rudbeckia fulgida</i>	all	2' – 3'	yellow flowers	sun	d	wildlife, buffer, ornamental
Goldenrod	<i>Solidago rugosa</i>	all	2' – 7'	yellow flowers	sun – ps	d – m	wildlife, buffer
New York ironweed	<i>Vernonia noveboracensis</i>	all	Up to 7'	deep purple flowers	sun	m – w	wildlife, buffer, ornamental
GROUNDCOVER	BOTANICAL NAME	REGION	HEIGHT	BLOOM/FRUIT	SUN/SHADE	DRY/WET	VALUE
Green and gold	<i>Chrysogonum virginianum</i>	all	4" – 12"	yellow-green flowers	ps – fs	m	ornamental
Woodland phlox	<i>Phlox divaricata</i>	mountains & piedmont	6" – 18"	blue flowers, semi-evergreen	ps	m	wildlife, ornamental
Creeping phlox	<i>Phlox stolonifera</i>	all	3" – 4"	semi-evergreen	sun – ps	m	ornamental
Sensitive fern	<i>Onoclea sensibilis</i>	all	18" – 24"	dried brown spore-stalks	ps – fs	m – w	ornamental
Foamflower	<i>Tiarella cordifolia</i>	mountains & piedmont	6"	white flower	ps	m – w	ornamental
GRASS	BOTANICAL NAME	REGION	HEIGHT	BLOOM/FRUIT	SUN/SHADE	DRY/WET	VALUE
Switchgrass	<i>Panicum virgatum</i>	all	3' – 5'	seeds	sun	d	wildlife, ornamental
Little bluestem	<i>Schizachyrium scoparium</i>	all	up to 3'	seeds	sun	d	wildlife, ornamental
Indian grass	<i>Sorghastrum nutans</i>	all	5' – 6'	seeds	sun	d – m	wildlife, ornamental

LEGEND

VALUE: Wildlife = provides food and/or shelter
 Buffers = for streamside or riparian areas
 Ornamental = attractive, decorative plant

SUN/SHADE: sun = sun
 ps = partial shade
 fs = full shade

DRY/WET: w = moisture
 m = moderate
 d = drought tolerant