



North Lebanon Township has three parks located within its boundaries. They are the Township Community Park which has two pavilions available for rent, Lions Lake Park which has three pavilions available for rent, and Lenni Lenape Park, which is our newest park with one pavilion available for rent. There is also a smaller pavilion available located within our Long Lane Sports Fields.

TOWNSHIP COMMUNITY PARK

The Township Community Park, which is located behind the township building at 725 Kimmerlings Road, offers two different pavilion rentals.

The first one is a full-service pavilion with complete kitchen amenities including two stoves, one refrigerator and a double sink. The pavilion has 15 picnic tables able to accommodate up to 120 people comfortably. It is adjacent to the restrooms, as well as the playground. We also have basketball courts at this park.



725 Kimmerlings Rd
Lebanon, PA 17046

Mon thru Fri
7:30am - 4:00pm

(717) 273-7132 phone
(717) 273-7672 fax



The other pavilion within the Township Community Park is located along the walking path between the sports fields. There are six picnic tables which can easily accommodate 48 people. This is simply an open-air pavilion with no electric or running water.



Open Air Pavilion



725 Kimmerlings Rd
Lebanon, PA 17046

Mon thru Fri
7:30am - 4:00pm

(717) 273-7132 phone
(717) 273-7672 fax

LIONS LAKE PARK

Lions Lake Park located at the intersection of Route 72 and Jay Street has one full-service pavilion and two open-air pavilions. The main entrance is located off Water Street. There is also parking available along Jay Street.

The full-service pavilion was recently remodeled and is equipped with two stoves, two refrigerators, a microwave and a deep double sink. The pavilion has 15 picnic tables able to accommodate up to 120 people comfortably. It is adjacent to the restrooms, as well as a small playground. There are horseshoe pits and a grilling area. We also have a volleyball court at this park and a larger playground. This pavilion is accessible off Jay Street.



725 Kimmerlings Rd
Lebanon, PA 17046

Mon thru Fri
7:30am - 4:00pm

(717) 273-7132 phone
(717) 273-7672 fax



Restrooms



Small Playground

The other two pavilions within Lions Lake Park are located along the walking path accessible from the Water Street Parking entrance. There are six picnic tables within each pavilion which can easily accommodate 48 people each. They are both simply open-air pavilions with no electric or running water. The first one is located just off the Water Street entrance while the second one is adjacent to the larger playground area.



Open Air Pavilion # 1



Open Air Pavilion # 1

725 Kimmerlings Rd
Lebanon, PA 17046

Mon thru Fri
7:30am - 4:00pm

(717) 273-7132 phone
(717) 273-7672 fax



Open Air Pavilion # 2



Open Air Pavilion # 2



Larger Playground



Larger Playground



Larger Playground

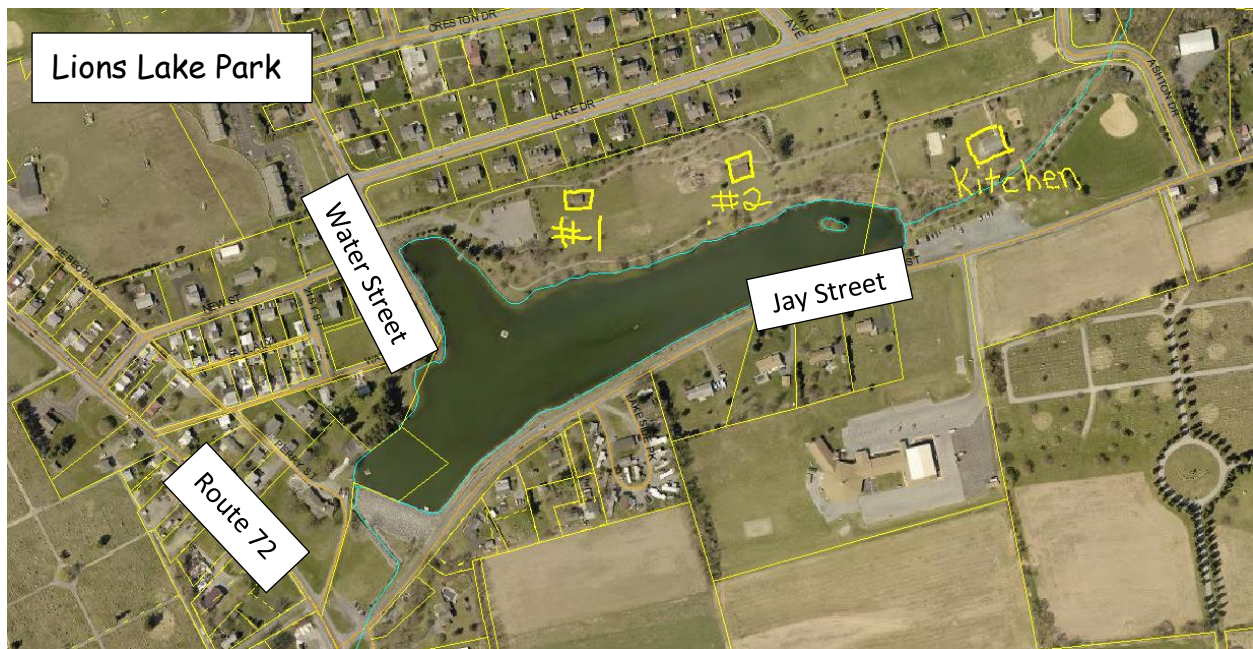


Larger Playground

725 Kimmerlings Rd
Lebanon, PA 17046

Mon thru Fri
7:30am - 4:00pm

(717) 273-7132 phone
(717) 273-7672 fax



LENNI LENAPE PARK

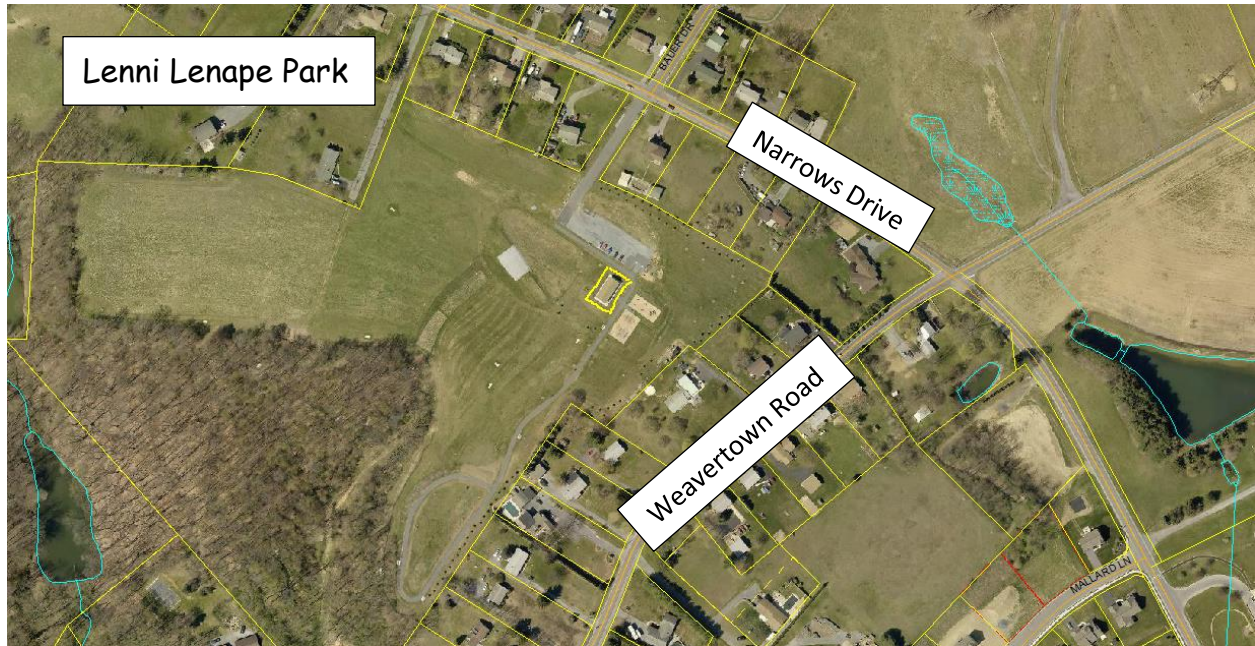
Lenni Lenape Park is our newest park which is located at 723 Narrows Drive, just north of Weavertown Road. This park offers one open air pavilion with six picnic tables which can easily accommodate 48 people. This open-air pavilion has electricity available, if desired. Please indicate whether you wish to use the electric so our park foreman can turn on the electric. The restrooms are located on the other half of the pavilion. This pavilion is handicap accessible and the views are beautiful from this park. It also has two playgrounds (one for younger children and one for older children), a walking path and a disc golf course. There are plenty of grassy areas for outdoor activities.



725 Kimmerlings Rd
Lebanon, PA 17046

Mon thru Fri
7:30am - 4:00pm

(717) 273-7132 phone
(717) 273-7672 fax



725 Kimmerlings Rd
Lebanon, PA 17046

Mon thru Fri
7:30am - 4:00pm

(717) 273-7132 phone
(717) 273-7672 fax

LONG LANE

The Long Lane pavilion has one pavilion with two picnic tables which can accommodate approximately 16 people. Plenty of room to bring your own lawn chairs. This pavilion sits between two baseball fields. The restrooms are directly beside the pavilion.



725 Kimmerlings Rd
Lebanon, PA 17046

Mon thru Fri
7:30am - 4:00pm

(717) 273-7132 phone
(717) 273-7672 fax

Pavilion Rental Fee Schedule

Pavilions with Full Kitchen Amenities

Saturday, Sunday & Holidays

Up to 100 people - \$125

101 people and up - \$175

Weekdays (Mon. - Fri., not counting holidays)

8:00 am to 3:00 pm

Up to 100 people - \$50

101 people and up - \$75

After 3:00 pm

Up to 100 people - \$80

101 people and up - \$110

Open Air Pavilions

Saturday, Sunday & Holidays	<u>Without Electric*</u>	<u>With Electric (Lenni)</u>
All day	\$50	\$75
Weekdays (Mon. - Fri.)		
8:00 am to 3:00 pm	\$25	\$50
After 3:00 pm	\$40	\$65

* Any Rental for "NO electric" cannot be changed to "WITH electric" (if not done during business hours prior to the day of the rental) unless the renting party is willing to pay the difference in fee between non-electric and electric AND the 3-hour minimum call out time for the employee to return to the rental pavilion at the listed WAGE rate in the Township Fee Schedule.

- The fees listed above include the use of the pavilion, shared use of the recreational areas and bathroom facilities. Please note authorized township recreational programs have priority for sports field use.
- Please supply your own hand soap. Electric hand dryers are located in the restrooms.
- NOTE: *Fees are subject to change.*

PLEASE NOTE: NO REFUNDS

To have first option on your preferred date for the following year, the completed request form must be submitted to the Township Office upon completion of your current rental. When requesting a reservation, the policy is to follow the same sequence (ex. 1st Sunday, 2nd Sunday etc. of the month). Requesting out of sequence may result in not having a reservation. Holiday weekends are no exception.